



*36<sup>th</sup> Annual Production Sale*  
*Wednesday, November 18<sup>th</sup>, 2009*  
*1:00 pm at the ranch*



# Welcome...

Welcome to LCI's annual production sale. The only place our cattle are put to auction! We would like to thank our customers and friends who have supported us and make our progress possible.

Mother nature has been rather cruel to our part of the country as well as many other areas...DRY! DRY! DRY! We need to reduce our cow numbers to let the grass come back and any cows that didn't fit the bill have gone to town. We still need to reduce our numbers, therefore we are offering a group of bred heifers in the sale, both Hereford and Angus, right out of our replacements.

The bull calves are a very uniform group packed with our newest genetics. The yearling bulls are a very strong group capable of breeding a large group of cows.

We would like to say a big thank you to the neighbors and friends who year in and year out help stage this sale. Your support and comradeship are what make this business so gratifying and it is greatly appreciated!

In closing, consider this your personal invitation to join us for lunch Wednesday, November 18 for some good food, to evaluate our sale offering and most importantly, join us in some great fellowship!



*Brad, Nelson and Paula Doenz  
Kristy and Ken Robinson*



*Helen Doenz*

## *The Doenz Family*

**\*NEW\* VOLUME DISCOUNT**  
Purchase 5 to 9 bulls or heifers  
or a combination of both  
and take 5% off the total price.  
OR  
Purchase 10 or more animals  
and take 10% off.



November 18, 2009 1:00 p.m. at the Ranch

Sale Day Phones

(403)642-7696 or (403)642-7694

Nelson & Paula Doenz

(403)642-2380

Brad Doenz

(403)642-3894

Cell Phone Directory:

Nelson.....(403)642-7696

Paula .....(403)642-7695

Brad .....(403)642-7694

Fax: (403)642-2471

E-mail: [doenzranches@gmail.com](mailto:doenzranches@gmail.com)

PO Box 362, Warner, Alberta Canada T0K 2L0

View Color Catalogue On-line: [www.doenzranches.net](http://www.doenzranches.net)



# Herd sires



## K 64H RIBSTONE LAD 157K

C02764939      CJK 157K      May 13 2000  
 BW: n/a      Adj. WWT: 738      Adj. YWT: 1268



EPD's	
BW	4.4
WW	52 <small>Top 10%</small>
YW	94 <small>Top 10%</small>
Milk	31 <small>Top 3%</small>
TM	57 <small>Top 3%</small>
MPI	168
REA	0.43 <small>Top 15%</small>
Fat	-0.02
Marb.	0.53 <small>Top 1%</small>

STANDARD RIBSTONE 16E  
**STANDARD 16E RIBSTONE 64H**  
 STANDARD LASS 23E  
 SNS SUPER PACE ET 61Z  
**K 61Z SUPER LADY 41G**  
 K 58X MASTER LADY 89Z

One of the most respected sires in recent times. He is proven and predictable. Sires bulls with added muscle, easy fleshing, and large scrotum. His females are awesome and they are the back bone of our herd today! His EPD profile is phenomenal and highly accurate with 519 progeny.



## LCI 157K RIBSTONE 107R

C02862176      LCI 107R      January 16 2005  
 BW: 94      Adj. WWT: 830      Adj. YWT: 1417



EPD's	
BW	4.0
WW	58 <small>Top 10%</small>
YW	101 <small>Top 4%</small>
Milk	27 <small>Top 10%</small>
TM	56 <small>Top 10%</small>
MPI	172
REA	0.60 <small>Top 5%</small>
Fat	-0.041
Marb.	0.21 <small>Top 6%</small>

STANDARD 16E RIBSTONE 64H  
**K 64H RIBSTONE LAD 157K**  
 K 61Z SUPER LADY 41G  
 LCI KAHLUA 82H  
**LCI 82H KAHLUA ANDIE 174M**  
 LCI 81F ANDIE 214K

107R is moderate framed and easy fleshing. His progeny were the most sought after in our 2008 sale. Moderate birth weights, big time performance, good milk and top carcass epds. Now owned with Courtney Herefords, Alzada, Montana.



## LBH 20J STANMORE 31R

C02864574      LBH 31R      February 16 2005  
 BW: 85      Adj. WWT: 746      Adj. YWT: 1223



EPD's	
BW	6.3
WW	69 <small>Top 1%</small>
YW	100 <small>Top 2%</small>
Milk	27 <small>Top 10%</small>
TM	61 <small>Top 1%</small>
MPI	185 <small>Top 2%</small>
REA	0.34
Fat	-0.019
Marb.	0.27 <small>Top 4%</small>

AGA 4016D STANMORE 121G  
**AGA 121G STANMORE 20J**  
 AGA 40E MISS STANMORE 80G  
 SJSI HI 20 STAND LAD 10S  
**LBH 10S STAN LASS 34N**  
 AGA 26H MISS STD BRITISH 120K

A bull that is extremely deep ribbed and easy fleshing. An athletic range bull that can cover a lot of cows. A performance bull with epds in the top of the breed. We are also using a son LCI 81T with some outstanding calves out of first calf heifers in the sale.



## LCI 31R KING STANMORE 159T

C02897303      LCI 159T      January 18 2007  
 BW: 92      Adj. WWT: 830      Adj. YWT: 1332



EPD's	
BW	8.8
WW	68 <small>Top 1%</small>
YW	106 <small>Top 3%</small>
Milk	24 <small>Top 15%</small>
TM	58 <small>Top 2%</small>
MPI	181
REA	0.34
Fat	-0.007
Marb.	0.10

AGA 121G STANMORE 20J  
**LBH 20J STANMORE 31R**  
 LBH 10S STAN LASS 34N  
 LCI 6K KINGSTON 90M  
**LCI 90M KINGSTON LADY 123R**  
 LCI 82H MISS KAHLUA 94K

Our exciting new addition to our bull battery. His first group of calves on the ground are all out of heifers and are outstanding and uniform.

# 2009 Hereford Bull Calves

All bulls will be wintered free of charge, but they must be INSURED! Buyer can pick up their bulls at their own convenience by April 1st, 2010. If the buyer should want their bulls delivered this fall we will deduct \$100 from the purchase price.

## Fall EPD Herefords Breed Averages

BW	WW	YW	Milk	TM
3.6	42	69	16	37



**1**

### LCI 107R RIBSTONE 70W

C02929408 LCI 70W January 20 2009  
BW: 80 Adj WWT: 817

EPD's	
BW	3.8
WW	52.9 <small>Top 15%</small>
YW	90.1 <small>Top 10%</small>
Milk	22.5 <small>Top 20%</small>
TM	49.0
REA	0.46 <small>Top 15%</small>
Fat	-0.037
Marb.	0.16 <small>Top 10%</small>

K 64H RIBSTONE LAD 157K

### LCI 157K RIBSTONE 107R

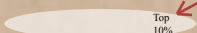
LCI 82H KAHLUA ANDIE 174M  
LBH 20J STANMORE 31R

### LCI 31R STANMORE LASS 151T

LCI 90M MRS KINGSTON 90M

A calf we are proud to have our prefix LCI on. A red eyed, short marked, performance bull with style, balance and thickness throughout. An 817 lb weaning weight born unassisted at 80 lbs to a fabulous young first calf 31R daughter. In herd bulls we always want great producing mother cows but also the herdsire must come from the consistently strong breeding line being able to stamp their offspring with their own distinct style and character. You have it all here with 70W. Take a look at his epds...BW is breed average, WW top 15%, YW top 10%, Milk top 20%, REA top 15% and Marbling 10%.

In order to help you quickly recognize the leaders for specific traits within the breed, we added the percentile ranking for their strongest EPD's. Look for the icon around the EPD trait which clearly identifies where they rank within the breed.

 This example would indicate the EPD for that trait is in the top 10% of the breed



EPD's	
BW	7.6
WW	63.5 <small>Top 1%</small>
YW	93.8 <small>Top 4%</small>
Milk	23.7 <small>Top 15%</small>
TM	55.5
REA	0.24
Fat	0.005
Marb.	0.17 <small>Top 10%</small>

**2**

### LCI 159T KING STANMORE 81W

C02929415 LCI 81W January 26 2009  
BW: 93 Adj WWT: 808

LBH 20J STANMORE 31R

### LCI 31R KING STANMORE 159T

LCI 90M KINGSTON LADY 123R  
LCI 157K RIBSTONE 46P

### LCI 46P RIBSTONE LASS 114T

LCI T097 TAM O'LASS 88M



A performance bull with explosive growth, 808 lb weaning weight out of a first calf heifer. Add pounds to your calves, but also raise top females. Milk EPD 23.7 is in the top 15% of the breed. He also has good carcass with marbling in the top 10% of the breed.



3

**LCI 107R RIBSTONE 167W**

C02929398 LCI 167W February 26 2009  
 BW: 99 Adj WWT: 796

EPD's	
BW	5.4
WW	53.8 <small>Top 10%</small>
YW	95.4 <small>Top 3%</small>
Milk	22.4 <small>Top 15%</small>
TM	49.3
REA	0.33 <small>Top 20%</small>
Fat	-0.014
Marb.	0.08 <small>Top 25%</small>

K 64H RIBSTONE LAD 157K

**LCI 157K RIBSTONE 107R**

LCI 82H KAHLUA ANDIE 174M  
 MW PRAIRIE 68H

**LCI 68H PRAIRIE LASS 115N**

LCI TAMMY 224H

A ranchers bull with length and thickness. His EPD's put him in the top 10% for WW, top 3% for YW, top 15% for Milk, top 20% for REA and 25% for Marbling. 115N has a WW index of 109 on her calves.

4

**LCI 68R RED STANDARD 18W**

C021919398 LCI 18W February 14 2009  
 BW: 104 Adj WWT: 781

EPD's	
BW	7.3
WW	52.7 <small>Top 10%</small>
YW	85.8 <small>Top 15%</small>
Milk	18.9
TM	45.3
REA	0.18
Fat	-0.003
Marb.	-0.06

JNHR RED STANDARD 283M

**JNHR RED STANDARD 68R**

PDHR 3X STAND LASS 72B  
 LCI KAHLUA 82H

**LCI 82H KAHLUA LASS 133M**

LCI SOUTH RIDGE LASS 186K

A favorite here at the ranch. A bull with length, thickness, muscle and dimension. His dam is a cow worthy of raising a herd sire. 133M has had 5 calves before 18W, all being heifers with WW index of 110 on them.



5

**LCI RC 68R RED RIBSTONE 57W**

C02929406 LCIB 57W February 06 2009  
 BW: 102 Adj WWT: 789

EPD's	
BW	6.9
WW	56.8 <small>Top 5%</small>
YW	89.3 <small>Top 10%</small>
Milk	18.2
TM	46.6
REA	0.28
Fat	0.0
Marb.	0.10 <small>Top 20%</small>

JNHR RED STANDARD 283M

**JNHR RED STANDARD 68R**

PDHR 3X STAND LASS 72B  
 K 64H RIBSTONE LAD 157K

**LCI BD RIBSTONE GAL 309R**

LCI 82H MISS KAHLUA 102K

A performance bull with style, balance and thickness throughout. His WW and YW EPD's are in the top 10% of the breed. He also has good carcass numbers. 309R is a very special 157K daughter with an index of 105 WW on her past 3 calves. The grandmother, 121H is the mother if our 4P herd sire. Top bull! Top pedigree!

6

**LCI 68R RED STANDARD 125W**

C02929429 LCI 125W January 27 2009  
 BW: 105 Adj WWT: 789

EPD's	
BW	6.9
WW	53.8 <small>Top 10%</small>
YW	82.2 <small>Top 15%</small>
Milk	19.2
TM	46.1
REA	0.34
Fat	-0.025
Marb.	0.12 <small>Top 15%</small>

JNHR RED STANDARD 283M

**JNHR RED STANDARD 68R**

PDHR 3X STAND LASS 72B  
 K 64H RIBSTONE LAD 157K

**LCI 157K RIBSTONE GAL 125R**

LCI 81F ANDIE 48K

A standout bull from birth, he has eye appeal, length, and thickness. When buying herd sires, it is important that the dam is outstanding and 125R is that. She has a milk epd of 25.5, REA +.42, M +.27. She is structurally faultless. She has the 157K stamp! In 125W you are going to add pounds, milk, and carcass!



**7**

**LCI BD STANMORE 313W**

C02929483 LCIB 313W February 01 2009  
 BW: 80 Adj WWT: 793

EPD's	
BW	3.8
WW	43.8
YW	82.2 <small>Top 15%</small>
Milk	21.0 <small>Top 20%</small>
TM	42.9
REA	0.25
Fat	-0.020
Marb.	0.13 <small>Top 10%</small>

LBH 20J STANMORE 31R  
**LCI 31R STANMORE 81T**  
 LCI 81F ANDIE 81K  
 LCI 157K RIBSTONE 79P  
**LCI BD 79P RIBSTONE LASS 304T**  
 BP 91F RUBY 72L

No holes in 313W! He is yellow colored, pigmented, clean fronted, extra deep bodied and has a back as wide as a table. 81T and 79P combination assures early growth and moderate frame size. A 80 lb birth weight and a 793 lb weaning weight. A truly balanced epd pedigree. Birth weight breed average, big performance, top milk and very good marbling & REA.



**8**

**LCI BD 159T KING STANMORE 311W**

C02929481 LCIB 311W January 31 2009  
 BW: 96 Adj WWT: 828

EPD's	
BW	7.6
WW	56.6 <small>Top 5%</small>
YW	89.2 <small>Top 5%</small>
Milk	21.3 <small>Top 20%</small>
TM	49.6
REA	0.19
Fat	0.010
Marb.	0.04

LBH 20J STANMORE 31R  
**LCI 31R KING STANMORE 159T**  
 LCI 90M KINGSTON LADY 123R  
 LCI 6H WALDO 125P  
**LCI BD MISS WALDO 310T**  
 LCI BD DUNBAR GIRL 211P

Here is a bull that is short marked and pigmented. 311W is smooth made, clean fronted and still has thickness and a deep quarter. A 828 lb weaning weight out of a feminine 125P first calf daughter with pigment on her udder. A calf with a performance pedigree, milk EPD in the top 20% and good carcass numbers.



**9**

**LCI 107R RIBSTONE 208W**

C02929464 LCI 208W January 31 2009  
 BW: 98 Adj WWT: 759

EPD's	
BW	5.4
WW	52.2 <small>Top 10%</small>
YW	85.1 <small>Top 10%</small>
Milk	24.2 <small>Top 10%</small>
TM	50.3
REA	0.35 <small>Top 15%</small>
Fat	-0.023
Marb.	0.07

K 64H RIBSTONE LAD 157K  
**LCI 157K RIBSTONE 107R**  
 LCI 82H KAHLUA ANDIE 174M  
 LCI 6K KINGSTON 90M  
**LCI 90M MRS KING 65P**  
 LCI 104K DUNBAR MISS 157M

A 107R son with style and top performance. Still has good milk with 24.2 EPD. His carcass is right in there with the best.



**10**

**LCI 68R RED STANDARD 157W**

C02929443 LCI 157W February 01 2009  
 BW: 98 Adj WWT: 763

EPD's	
BW	6.1
WW	51.6 <small>Top 10%</small>
YW	86.5 <small>Top 10%</small>
Milk	17.8
TM	43.6
REA	0.17
Fat	0.002
Marb.	0.11 <small>Top 15%</small>

JNHR RED STANDARD 283M  
**JNHR RED STANDARD 68R**  
 PDHR 3X STAND LASS 72B  
 K 64H RIBSTONE LAD 157K  
**LCI KD 157K RIBSTONE GAL 16S**  
 LCI KD SAPPHIRE 159H

A gentle disposition, long bodied, correct, eye appealing 68R son. 68R consistently adds bone, correct feet and legs. 16S is from one of my favorite cow lines. Generations of super udders, easy fleshing, very sound cattle, going back to Kristy's 4-H 12B cow.



**11**

**LCI 107R RIBSTONE 130W**

C02929430 LCI 130W January 24 2009  
 BW: 92 Adj WWT: 727

EPD's	
BW	3.6
WW	45.2
YW	80.1
Milk	20.4
TM	43.0
REA	0.24
Fat	-0.025
Marb.	0.06

K 64H RIBSTONE LAD 157K  
**LCI 157K RIBSTONE 107R**  
 LCI 82H KAHLUA ANDIE 174M  
 JNHR DIAMOND 99D  
**LCI DIAMOND GIRL 38J**  
 LCI SUPER BRITISH 9D

The 9<sup>th</sup> calf for 38J and she has a good one! Light colored and short marked. A bull with a foot in each corner, clean fronted yet thick. 38J is sound and youthful looking older matron. Top EPD's and a lighter birth weight.



**12**

**LCI 107R RIBSTONE 211W**

C02929466 LCI 211W January 25 2009  
 BW: 93 Adj WWT: 759

EPD's	
BW	4.2
WW	48.6
YW	88.0
Milk	22.6
TM	46.9
REA	0.36
Fat	-0.003
Marb.	0.20

K 64H RIBSTONE LAD 157K  
**LCI 157K RIBSTONE 107R**  
 LCI 82H KAHLUA ANDIE 174M  
 LCI 6K KING 155N  
**LCI 155N MRS KING 50R**  
 LCI 91B DOMINO LASS 206E

He has a bred in performance pedigree. He possesses outstanding length of body and width over top. 50R is a good daughter out of the King 155N bull. The grandmother 206E also has a good bull calf in the sale. 211W has top of the breed performance EPD's as well as milk. He is in the top 15% for REA and top 5% for marbling. Buy 211W to add pounds to your calf crop, but expect super females!



**13**

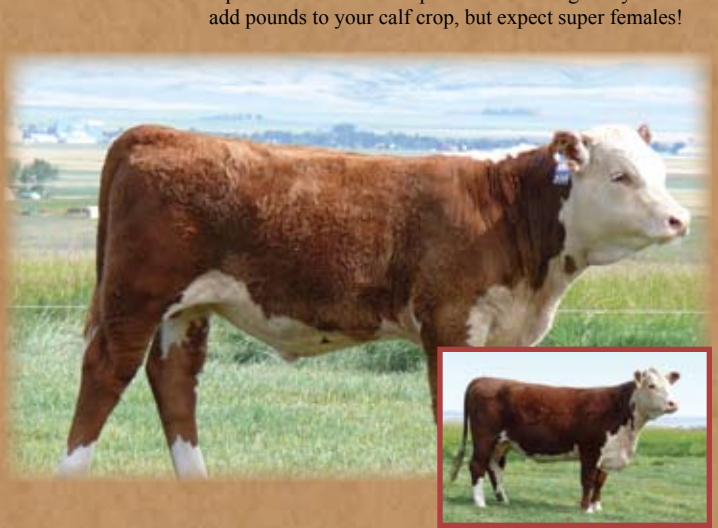
**LCI 107R RIBSTONE 137W**

C02929434 LCI 137W February 02 2009  
 BW: 102 Adj WWT: 753

EPD's	
BW	5.3
WW	47.6
YW	81.2
Milk	21.5
TM	45.3
REA	0.29
Fat	-0.021
Marb.	0.13

K 64H RIBSTONE LAD 157K  
**LCI 157K RIBSTONE 107R**  
 LCI 82H KAHLUA ANDIE 174M  
 LCI 6K KINGSTON 90M  
**LCI 90M MRS KING 111P**  
 STORMOUNT 17L

An attractive herdsire prospect. He is deep ribbed and has high capacity. His EPD's are all in the top of the breed and very good carcass as well. His dam is an easy fleshing, good uddered 90M daughter. Her calves have an average WI of 106 and YI of 105.



**14**

**LCI 68R RED STANDARD 181W**

C02929459 LCI 181W January 28 2009  
 BW: 98 Adj WWT: 744

EPD's	
BW	7.8
WW	56.8
YW	103.8
Milk	18.7
TM	47.1
REA	0.28
Fat	-0.022
Marb.	0.00

JNHR RED STANDARD 283M  
**JNHR RED STANDARD 68R**  
 PDHR 3X STAND LASS 72B  
 LCI 157K RIBSTONE 52N  
**LCI 52N RIBSTONE GAL 141S**  
 LCI 6H OSWALD MISS 77P

A good solid son of 68R. 141S is a top young cow. Look her up sale day.

15



Lot 15 -pictured above and dam pictured right



EPD's	
BW	1.0 <small>Top 3%</small>
WW	38.7
YW	62.4
Milk	16.4
TM	35.8
REA	0.09
Fat	0.025
Marb.	0.06

**LCI 68R RED STANDARD 21W**

C02929399 LCI 21W February 10 2009  
 BW: 68 Adj WWT: 677

JNHR RED STANDARD 283M  
**JNHR RED STANDARD 68R**  
 PDHR 3X STAND LASS 72B  
 LCI KAHLUA 82H

**LCI 82H MISS KAHLUA 150M**  
 LCI 6H OSWALD MISSY 23K

Excellent bull with style, thickness and clean fronted. He is fully pigmented and short marked. His dam, 150M is a fault free Kahlua cow that is moderate framed. 21W has a birth weight EPD well below breed average.



16

**LCI 68R RED STANDARD 198W**

C02929462 LCI 198W February 01 2009  
 BW: 98 Adj WWT: 754

JNHR RED STANDARD 283M  
**JNHR RED STANDARD 68R**  
 PDHR 3X STAND LASS 72B  
 LCI 157K RIBSTONE 35N

**LCI 35N RIBSTONE GAL 26R**  
 LCI T097 TAM O'LASS 44N

An attractive red eyed bull that will stand out on sale day. 26R has maintenance free up tight udder.

EPD's	
BW	6.9
WW	52.9
YW	79.0
Milk	14.5
TM	41.0
REA	0.22
Fat	-0.031
Marb.	-0.07

17

**LCI RED CLASSIC 39W**

C02929492 LCI 39W February 06 2009  
 BW: 89 Adj WWT: 776

JNHR RED STANDARD 283M  
**JNHR RED STANDARD 68R**  
 PDHR 3X STAND LASS 72B  
 LCI 157K RIBSTONE 4P

**LCI 4P GILLIAN 19S**  
 LCI 9640 PRINCESS 214L

A long spined pigmented bull with more than adequate muscle. What a tremendous mother, her feet and udder are impeccable.

EPD's	
BW	3.1
WW	25.8
YW	48.7
Milk	9.2
TM	22.1
REA	-0.09
Fat	-0.018
Marb.	0.01

18

**LCI 4P RIBSTONE 173W**

C002929453 LCI 173W January 28 2009  
 BW: 88 Adj WWT: 695

K 64H RIBSTONE LAD 157K  
**LCI 157K RIBSTONE 4P**  
 LCI SUPERIOR GIRL 121H  
 JES SUPER SAM 703

**LCI 703 JACKPOT LADY 147L**  
 LCI SUPERIOR GIRL 123H

Bull written all over this fellow, extra muscle like his sire 4P. He has below breed average for birth weight, yet above average for WW and YW. Super big ribeye EPD and above average for marbling.

EPD's	
BW	3.4
WW	46.8
YW	76.1
Milk	12.2
TM	35.6
REA	0.32 <small>Top 20%</small>
Fat	-0.030
Marb.	0.10 <small>Top 15%</small>

19

**LCI 68R RED STANDARD 120W**

C02929428 LCI 120W January 29 2009  
 BW: 96 Adj WWT: 738

JNHR RED STANDARD 283M  
**JNHR RED STANDARD 68R**  
 PDHR 3X STAND LASS 72B  
 LCI 6K KINGSTON 90M

**LCI 90M KINGSTON GIRL 147R**  
 LCI 172H DUNBAR GIRL 138K

A pleasing profiled bull with a foot in each corner. He will be a breeding bull!

EPD's	
BW	6.3
WW	47.0
YW	74.3
Milk	14.2
TM	37.7
REA	0.20
Fat	0.001
Marb.	-0.03

20

**LCI 68R RED STANDARD 160W**

C02929444 LCI 160W February 10 2009  
 BW: 92 Adj WWT: 787

JNHR RED STANDARD 283M  
**JNHR RED STANDARD 68R**  
 PDHR 3X STAND LASS 72B  
 LCI 6K KING 155N

**LCI 155N MRS KING 65R**  
 LCI STAR BRIGHT 1J

A good calf that is hard to fault. He has lots of style, length and muscle. A big weaning weight and a 92 lb birth weight.

EPD's	
BW	4.9
WW	44.8
YW	74.2
Milk	14.0
TM	36.4
REA	0.16
Fat	-0.010
Marb.	-0.01

21

**LCI BD CLASSIC 356W**

C02929496 LCI B 356W March 09 2009  
 BW: 89 Adj WWT: 729

BP PANDA 122P  
**LCI 122P PANDA 51T**  
 LCI KD CRYSTAL 7N  
 K 64H RIBSTONE LAD 157K

**LCI BD 157K RIBSTONE GAL 411S**  
 LCI 81F ANDY GIRL 211L

I especially like this fellow's mom. A hard working 157K cow that is moderate in frame. A young calf with a 89 lb birth weight. Use safely on heifers.

EPD's	
BW	1.4 <small>Top 15%</small>
WW	17.4
YW	28.4
Milk	13.9
TM	22.6
REA	0.01
Fat	-0.023
Marb.	0.05



**22****LCI 159T KING STANMORE 101W**C02929421 LCI 101W January 31 2009  
BW: 95 Adj WWT: 719

EPD's	
BW	8.7
WW	66.0 <small>Top 1%</small>
YW	111.3 <small>Top 1%</small>
Milk	18.6
TM	51.6
REA	0.38 <small>Top 15%</small>
Fat	-0.028
Marb.	0.05

LBH 20J STANMORE 31R  
**LCI 31R KING STANMORE 159T**  
LCI 90M KINGSTON LADY 123R  
LCI 157K RIBSTONE 4P**LCI 4P RIBSTONE LASS 177T**  
LCI 175K JACKPOT MISS 215M

An attractive calf with extra length out of a super 4P first calf heifer. Big time growth EPD's with WW in top 2% and YW in top 2% of the breed. He also has good carcass EPD's.

**23****LCI KK 81T BANDERAS 562W**C02925510 LCI 562W January 23 2009  
BW: 105 Adj WWT: 728

EPD's	
BW	8.8
WW	56.0 <small>Top 4%</small>
YW	94.9 <small>Top 3%</small>
Milk	21.5 <small>Top 20%</small>
TM	49.5 <small>Top 5%</small>
REA	0.28
Fat	-0.014
Marb.	0.03

LBH 20J STANMORE 31R  
**LCI 31R STANMORE 81T**  
LCI 81F ANDIE 81K  
LCI 6H WALDO 125P  
**LCI 125P MISS WALDO 20T**  
LCI T097 TAM O'LASS 118N

A thick chested 81T son with a weaning weight of 728 lbs. He is out of a stout good milking first calf 125P daughter.

**24****LCI 159T STANMORE 73W**C02929411 LCI 73W February 06 2009  
BW: 99 Adj WWT: 830

EPD's	
BW	9.4
WW	67.0 <small>Top 1%</small>
YW	103.3 <small>Top 1%</small>
Milk	20.6 <small>Top 20%</small>
TM	54.1 <small>Top 2%</small>
REA	0.41 <small>Top 20%</small>
Fat	-0.015
Marb.	-0.17

LBH 20J STANMORE 31R  
**LCI 31R KING STANMORE 159T**  
LCI 90M KINGSTON LADY 123R  
BP PANDA 122P**LCI 122P PANDA 43T**  
LCI KD JASMINE 195L

Do you want them red and with pigment? Do you want to increase weaning weight? 73W has a WW of 830 lb and index of 111. His first calf Panda daughter has pigmented eyes and also udder. 73W's rib eye EPD is in the top 20% of the breed.

**25****LCI 4P RIBSTONE 175W**C02929454 LCI 175W February 02 2009  
BW: 97 Adj WWT: 784

EPD's	
BW	5.6
WW	52.7 <small>Top 15%</small>
YW	91.4 <small>Top 5%</small>
Milk	16.7
TM	43.0
REA	0.23
Fat	-0.005
Marb.	-0.02

K 64H RIBSTONE LAD 157K  
**LCI 157K RIBSTONE 4P**  
LCI SUPERIOR GIRL 121H  
LCI 6K KINGSTON 90M  
**LCI 9M MRS KING 191P**  
LCI 172H DUNBAR GIRL ET 34K

A calf with lots of middle and will add pounds. There is easy fleshing in his cow family.

**26****LCI WB 68R RED STANDARD 155W**C02929442 LCI 155W January 31 2009  
BW: 97 Adj WWT: 738

EPD's	
BW	5.9
WW	54.0 <small>Top 10%</small>
YW	88.3 <small>Top 10%</small>
Milk	17.5
TM	44.5
REA	0.24
Fat	-0.005
Marb.	0.09

JNHR RED STANDARD 283M  
**JNHR RED STANDARD 68R**  
PDHR 3X STAND LASS 72B  
K 64H RIBSTONE LAD 157K  
**JTB 257K RIBSTONE LASS 901P**  
JTB 68H MRS WYAT 800M

As much muscle and quarter as any. Again out of a 157K daughter does not hurt either.

**27****LCI CLASSIC 203W**C02929495 LCI 203W February 20 2009  
BW: 96 Adj WWT: 802

EPD's	
BW	3.6
WW	22.5
YW	45.0
Milk	13.9
TM	25.1
REA	-0.09
Fat	0.009
Marb.	0.00

BP PANDA 122P  
**LCI 122P PANDA 51T**  
LCI KD CRYSTAL 7N  
LCI 6H WALDO 125P  
**LCI 125P NELLIE 105S**  
LCI T097 TAM O'LASS 43M

He walks wide behind and has a wide thick back. 105S son 154U was retained to use in our herd. That is how much we think of her.

**28****LCI RED RIBSTONE 38W**C02930119 LCI 38W February 05 2009  
BW: 100 Adj WWT: 751

EPD's	
BW	2.9 <small>Top 3%</small>
WW	22.4
YW	39.7
Milk	15.6
TM	26.8
REA	-0.05
Fat	-0.013
Marb.	0.02

BP PANDA 122P  
**LCI 122P PANDA 51T**  
LCI KD CRYSTAL 7N  
K 64H RIBSTONE LAD 157K  
**LCI 157K RIBSTONE GAL 40S**  
LCI KD JASMINE 195L

This bulls dam is to die for, a 157K daughter, be sure to look her up sale day! 38W's birth weight EPD is below breed average.

**29****LCI 159T KING STANMORE 93W**C02929418 LCI 93W January 24 2009  
BW: 92 Adj WWT: 832

EPD's	
BW	7.6
WW	60.8 <small>Top 2%</small>
YW	94.8 <small>Top 4%</small>
Milk	18.5
TM	48.9
REA	0.27
Fat	-0.016
Marb.	-0.03

LBH 20J STANMORE 31R  
**LCI 31R KING STANMORE 159T**  
LCI 90M KINGSTON LADY 123R  
BP PANDA 122P  
**LCI 122P PANDA 42T**  
LCI 9640 PRINCESS 204L

A standout since birth! This 159T red eyed bull has an 832 weaning weight out of a first calf heifer. A good solid calf that will increase pounds in any herd.



**30****LCI 107R RIBSTONE 32W**C02929400 LCI 32W February 10 2009  
BW: 87 Adj WWT: 712

EPD's	
BW	4.2
WW	46.1
YW	81.2
Milk	18.4
TM	41.5
REA	0.36 <small>Top 25%</small>
Fat	-0.030
Marb.	0.12 <small>Top 20%</small>

K 64H RIBSTONE LAD 157K

**LCI 157K RIBSTONE 107R**LCI 82H KAHLUA ANDIE 174M  
LCI 6K KINGSTON 90M**LCI 90M MRS KINGSTON 83R**

LCI VOLTAGE LASS 81G

A moderate framed bull, yet chucked full of muscle. Breed leading EPD's straight across the board. REA in the top 25% and Marbling top 20%. You will like his red eyed dam 83R.

**31****LCI 81T STANMORE 83W**C02929416 LCI 83W February 08 2009  
BW: 98 Adj WWT: 775

EPD's	
BW	6.3
WW	50.7 <small>Top 15%</small>
YW	84.7 <small>Top 15%</small>
Milk	21.4 <small>Top 20%</small>
TM	46.8
REA	0.26
Fat	-0.002
Marb.	-0.04

LBH 20J STANMORE 31R

**LCI 31R STANMORE 81T**LCI 81F ANDIE 81K  
LCI 6H WALDO 125P**LCI 125P MISS WALDO 23T**

LCI 9M MRS KING 191P

A red calf with thickness out of a pigmented moderate framed first calf 125P daughter. Good performance and milk bull.

**32****LCI 81T STANMORE 108W**C02929424 LCI 108W Feb. 03 2009  
BW: 102 Adj WWT: 792

EPD's	
BW	7.6
WW	54.8 <small>Top 10%</small>
YW	96.9 <small>Top 10%</small>
Milk	23.0 <small>Top 10%</small>
TM	50.4
REA	0.34 <small>Top 15%</small>
Fat	-0.045
Marb.	0.04

LBH 20J STANMORE 31R

**LCI 31R STANMORE 81T**LCI 81F ANDIE 81K  
LCI 157K RIBSTONE 52N**LCI 52N RIBSTONE LASS 77T**

LCI 82H MISS KAHLUA 144M

A 792 lb bull out of a first calf Ribstone heifer with ample milk and a nice level udder. 81T makes his calves stout!

**33****LCI 159T KING STANMORE 92W**C02929417 LCI 92W January 29 2009  
BW: 92 Adj WWT: 751

EPD's	
BW	6.6
WW	55.0 <small>Top 5%</small>
YW	87.3 <small>Top 10%</small>
Milk	21.6 <small>Top 15%</small>
TM	49.1
REA	0.26
Fat	-0.001
Marb.	0.06 <small>Top 30%</small>

LBH 20J STANMORE 31R

**LCI 31R KING STANMORE 159T**LCI 90M KINGSTON LADY 123R  
LCI 6H WALDO 125P**LCI 125P WALDO LASS 7T**

LCI 148L REFORM LASS 28P

7T is an easy fleshing thick made first calf heifer that put a lot into this calf. Very strong EPD's for performance, milk and above average for carcass.

**34****LCI 81T STANMORE 63W**C02929407 LCI 63W February 24 2009  
BW: 108 Adj WWT: 778

EPD's	
BW	8.6
WW	57.5 <small>Top 4%</small>
YW	99.4 <small>Top 2%</small>
Milk	22.7 <small>Top 15%</small>
TM	51.5
REA	0.21 <small>Top 15%</small>
Fat	0.006
Marb.	0.04

LBH 20J STANMORE 31R

**LCI 31R STANMORE 81T**LCI 81F ANDIE 81K  
LCI 6H WALDO 125P**LCI 125P MISS WALDO 61T**

LCI 82H KAHLUA LADY 109L

A calf with early growth and will have moderate mature frame. 81T and 125P are sires that are easy fleshing active herd bulls. 63W will breed a lot of cows.

**35****LCI 81T STANMORE 71W**C02929409 LCI 71W January 22 2009  
BW: 90 Adj WWT: 816

EPD's	
BW	7.0
WW	56.7 <small>Top 5%</small>
YW	98.6 <small>Top 2%</small>
Milk	19.7
TM	48.0
REA	0.26
Fat	-0.020
Marb.	0.08

LBH 20J STANMORE 31R

**LCI 31R STANMORE 81T**LCI 81F ANDIE 81K  
LCI 157K RIBSTONE 4P**LCI 4P RIBSTONE LASS 133T**

LCI 90M KINGSTON LADY 118R

A bull with a 90 lb birth weight and a 816 lb weaning weight out of a first calf 4P daughter. That pretty much says it all!

**36****LCI 81T STANMORE 72W**C02929410 LCI 72W January 31 2009  
BW: 92 Adj WWT: 821

EPD's	
BW	6.2
WW	54.0 <small>Top 4%</small>
YW	87.5 <small>Top 3%</small>
Milk	18.2
TM	45.2
REA	0.31 <small>Top 20%</small>
Fat	-0.030
Marb.	-0.10 <small>Top 20%</small>

LBH 20J STANMORE 31R

**LCI 31R STANMORE 81T**LCI 81F ANDIE 81K  
BP PANDA 122P**LCI 122P PANDA 73T**

LCI 6H OSWALD 112M

Short marked and pigmented like his sire and dam. Notice his 92 lb birth weight and 821 weaning weight out of a first calf heifer. Lots of performance, top EPDS and still a milk EPD of +18. A good REA EPD of +.31

**37****LCI 4P RIBSTONE 169W**C02929450 LCI 169W February 19 2009  
BW: 98 Adj WWT: 780

EPD's	
BW	5.7
WW	54.6 <small>Top 10%</small>
YW	85.4 <small>Top 15%</small>
Milk	16.9
TM	44.2
REA	0.37 <small>Top 15%</small>
Fat	-0.041
Marb.	-0.02

K 64H RIBSTONE LAD 157K

**LCI 157K RIBSTONE 4P**LCI SUPERIOR GIRL 121H  
96 ANDY 81F**LCI 81F ANDIE 214K**

LCI MADISON DEBI 183G

Extra performance bred into this solid built fellow. 169W is the 8<sup>th</sup> calf for 214K, who is the grand dam of our 107R herd bull. 183G, the grandmother is still going strong also. Longevity is bred in.



38

**LCI 31R STANMORE 177W**C02929456 LCI 177W February 01 2009  
BW: 105 Adj WWT: 803

EPD's	
BW	7.4
WW	62.1 <sup>Top 1%</sup>
YW	96.2 <sup>Top 2%</sup>
Milk	24.1 <sup>Top 5%</sup>
TM	55.2 <sup>Top 1%</sup>
REA	0.24
Fat	0.002
Marb.	0.11 <sup>Top 15%</sup>

AGA 121G STANMORE 20J

**LBH 20J STANMORE 31R**LBH 10S STAN LASS 34N  
LCI KAHLUA 82H**LCI 82H KAHLUA LADY 182N**

LCI 36G MARY CHERRY 119L

A powerful 31R calf that will increase pounds for you to sell, just look at 177W's weaning weight. His milk EPD is in the top 10% of the breed.

39

**LCI 68R RED STANDARD 213W**C02929467 LCI 213W January 31 2009  
BW: 90 Adj WWT: 742

EPD's	
BW	5.1
WW	37.6
YW	57.4
Milk	13.9
TM	32.7
REA	0.05
Fat	-0.014
Marb.	-0.11

JNHR RED STANDARD 283M

**JNHR RED STANDARD 68R**PDHR 3X STAND LASS 72B  
LCI JUSTICE 250F**LCI MISS JUSTICE 221J**

LCI YOUNG LADY 205D

Again a bull right out of the 68R mold. This is the 9<sup>th</sup> calf for 221J and so she has passed the test of time!

40

**LCI 107R RIBSTONE 168W**C02929449 LCI 168W January 25 2009  
BW: 80 Adj WWT: 694

EPD's	
BW	5.4
WW	52.0 <sup>Top 10%</sup>
YW	89.4 <sup>Top 10%</sup>
Milk	23.4 <sup>Top 10%</sup>
TM	49.4 <sup>Top 10%</sup>
REA	0.39 <sup>Top 10%</sup>
Fat	-0.034
Marb.	-0.04

K 64H RIBSTONE LAD 157K

**LCI 157K RIBSTONE 107R**LCI 82H KAHLUA ANDIE 174M  
FA ROCK SOLID BRITISHER 67M**LCI 67M SOLID ROCK GAL 172R**

LCI VIOLA 230H

Right out of the 107R mold. Moderate framed and added performance. Cattle with milk bred in.

41

**LCI 4P RIBSTONE 153W**C02925377 LCI 153W February 18 2009  
BW: 94 Adj WWT: 855

EPD's	
BW	5.8
WW	51.5 <sup>Top 15%</sup>
YW	91.4
Milk	15.8
TM	41.5
REA	0.12
Fat	0.008
Marb.	0.11 <sup>Top 15%</sup>

K 64H RIBSTONE LAD 157K

**LCI 157K RIBSTONE 4P**LCI SUPERIOR GIRL 121H  
LCI YOUNG RANGER 91B**LCI 91B DOMINO LASS 206E**

LCI ROYAL QUEEN 138C

Lots of yellow hair on this short marked 4P son. This is 206E's 12<sup>th</sup> calf and he still has a weaning weight of 855 lbs. I think that says a lot about the cow family.

42

**LCI 68R RED STANDARD 201W**C02929463 LCI 201W February 01 2009  
BW: 90 Adj WWT: 723

EPD's	
BW	4.2
WW	45.9
YW	73.8
Milk	18.8
TM	41.8
REA	0.09
Fat	0.013
Marb.	0.19

JNHR RED STANDARD 283M

**JNHR RED STANDARD 68R**PDHR 3X STAND LASS 72B  
K 64H RIBSTONE LAD 157K**LCI 157K RIBSTONE GAL 110R**

LCI 82H KAHLUA GIRL 155M

The 68R x 157K combination has been good to us. 201W has extra length but retains good muscle expression.

E

**JNHR RED STANDARD 68R**C02872588 PMT 68R April 02 2005  
BW: 94 Adj WWT: n/a Adj YWT: n/a

EPD's	
BW	8.2
WW	60 <sup>Top 6%</sup>
YW	92 <sup>Top 10%</sup>
Milk	13
TM	42
REA	0.26
Fat	-0.03
Marb.	-0.04

JNHR STANDARD LAD 329J

**JNHR RED STANDARD 283M**

JNHR FIRST LADY 187E

MELSTAR STANDARD VOLT 3X

**PDHR 3X STAND LASS 72B**

PDHR 25S DOMINO LASS 71Y

2007 Calgary Champion Bull. A bull with wonderful breed character, his muscle pattern, deep rib and all over structural correctness puts him in a league of his own. His calves are outstanding and he consistently puts his stamp on each calf. Owned with the Floyd Anderson family.

## Reference Sires



E



F



G

F

**LCI 157K RIBSTONE 4P**C02843225 LCI 4P January 23 2004  
BW: 101 Adj WWT: 913 Adj YWT: 1425

EPD's	
BW	6.8
WW	69 <sup>Top 1%</sup>
YW	118 <sup>Top 1%</sup>
Milk	15
TM	49 <sup>Top 10%</sup>
REA	0.40 <sup>Top 20%</sup>
Fat	-0.022
Marb.	0.14 <sup>Top 15%</sup>

STANDARD 16E RIBSTONE 64H

**K 64H RIBSTONE LAD 157K**K 61Z SUPER LADY 41G  
JNHR DIAMOND 99D**LCI SUPERIOR GIRL 121H**

LCI BIG REDS LASS 57A

Powerful performance yet has super daughters. His dam is one of very elite older females. Owned with Courtney Herefords, Montana and Keith & Gillian Miles, Australia.

G

**LCI 6H WALDO 125P**C02843292 LCI 125P January 16 2004  
BW: 105 Adj WWT: 733 Adj YWT: 1237

EPD's	
BW	6.2
WW	45
YW	83
Milk	22
TM	45
REA	.12
Fat	0.056
Marb.	0.007

SSD MONTANA 9640 1ET

**LCI BD OSWALD 6H**LCI MAVERICK 32F  
LCI KAHLUA 82H**LCI 82H MISS KAHLUA 146K**

LCI STD BRIT LASS 21E

A bull that is short marked, pigmented and easy fleshing. A real pasture bull that will service a lot of cows. His first heifer crop have calved with many having sale bulls. They are special! Owned with Wendell Reimer, Manitoba.

# Hereford Yearling Bulls

No bulls held back for spring bull sales. All our best are being offered. All bulls are wintered free of charge, but must be INSURED. Buyer can pick up their bull at their convenience by April 1st, 2010. If the buyer should want the bull delivered this fall they may deduct \$100 off the purchase price.



43

## LCI 68R RED STANDARD 60U

C02911774 LCI 60U January 26 2008  
 BW: 95 Adj WWT: 633 YWT: 1280

EPD's	
BW	5.6
WW	42.4
YW	70.7
Milk	14.0
TM	35.2
REA	0.07
Fat	-0.004
Marb.	-0.17

JNHR RED STANDARD 283M  
**JNHR RED STANDARD 68R**  
 PDHR 3X STAND LASS 72B  
 BP ROBIN HOOD 6N  
**LCI 6N ROBIN HOOD MISS 71R**  
 LCI 81F ANDY GIRL 41L

He is light colored, short marked and pigmented. A bull with eye appeal. His dam has a perfect udder.

44

## LCI 68R RED STANDARD 97U

C02911608 LCI 97U February 01 2008  
 BW: 105 Adj WWT: 715 YWT: n/a

EPD's	
BW	10.6
WW	63.4
YW	104.5
Milk	15.6
TM	47.3
REA	0.31
Fat	-0.022
Marb.	-0.04

JNHR RED STANDARD 283M  
**JNHR RED STANDARD 68R**  
 PDHR 3X STAND LASS 72B  
 SMITHSTON TAM O'SHANTER ET2  
**LCI T097 TAM O'LASS 45N**  
 ILK SUPER GIRL 59J

Extra long bodied, a bull with a long stride. A real traveler. He really has a top performance pedigree.



45

## LCI 52N RIBSTONE 116U

C02911509 LCI 116U Feb. 08 2008  
 BW: 98 Adj WWT: 740 YWT: 1280

EPD's	
BW	6.1
WW	47.3
YW	82.1
Milk	21.0
TM	44.6
REA	0.21
Fat	-0.028
Marb.	-0.05

K 64H RIBSTONE LAD 157K  
**LCI 157K RIBSTONE 52N**  
 LCI 172H DESTINY 215K  
 LCI KAHLUA 82H  
**LCI 82H KAHLUA LADY 89L**  
 LCI STANDARD LADY 162J

Notice the excellent milk EPD and the big rib eye area. 116U is extra thick and meaty.

46

## LCI 52N RIBSTONE 91U

C02911554 LCI 91U Feb. 22 2008  
 BW: 104 Adj WWT: 692 YWT: 1210

EPD's	
BW	5.9
WW	44.3
YW	75.8
Milk	20.7
TM	42.8
REA	0.10
Fat	-0.017
Marb.	-0.03

K 64H RIBSTONE LAD 157K  
**LCI 157K RIBSTONE 52N**  
 LCI 172H DESTINY 215K  
 LCI KAHLUA 82H  
**LCI 82H MISS KAHLUA 159M**  
 LCI 69F STANDARD LADY 20K

Extra thick just like his good 82H dam. 91U comes from a strong line of easy fleshing, good doing cattle.



**47**

**LCI 107R RIBSTONE 157U**

C02911686 LCI 157U February 17 2008  
 BW: 82 Adj WWT: 719 WY: 1100

K 64H RIBSTONE LAD 157K

**LCI 157K RIBSTONE 107R**

LCI 82H KAHLUA ANDIE 174M  
 LCI 6H WALDO 125P

**LCI 125P OSWALD LASSY 59S**

LCI 157K RIBSTONE GIRL 214N

EPD's	
BW	2.7 <small>Top 3%</small>
WW	46.1
YW	75.5
Milk	25.9 <small>Top 5%</small>
TM	49.0
REA	0.37
Fat	-0.006
Marb.	0.17 <small>Top 10%</small>

A moderate framed bull with pigment and short marked. He has a light birth weight with extra performance and a high milk EPD. Super carcass numbers also. If you are looking to moderate the frame size of your cow herd without giving the early growth in the calves then look at 157U.

**48**

**LCI 71S RC CLOONEY 190U**

C02923694 LCIB 190U March 15 2008  
 BW: 94 Adj WWT: 747 WY: N/A

LCI 6H WALDO 125P

**LCI 125P CLOONEY 71S**

LCI 157K RIBSTONE GIRL 126N  
 K 64H RIBSTONE LAD 157K

**LCI BD RIBSTONE GAL 309R**

LCI 82H MISS KAHLUA 102K

EPD's	
BW	5.9
WW	50.7 <small>Top 15%</small>
YW	85.4 <small>Top 15%</small>
Milk	23.3 <small>Top 10%</small>
TM	48.7
REA	0.21
Fat	0.013
Marb.	0.18 <small>Top 10%</small>

A top individual bull that is short marked and very complete. His EPD's are all top of the breed as well as his carcass EPD's. His dam is a super 157K daughter.



**49**

**LCI 52N RIBSTONE 89U**

C02911614 LCI 89U Feb. 04 2008  
 BW: 103 Adj WWT: 691 YWT: 1320

K 64H RIBSTONE LAD 157K

**LCI 157K RIBSTONE 52N**

LCI 172H DESTINY 215K  
 LCI KAHLUA 82H

**LCI 82H KAHULA LADY 170N**

LCI 81F ANDY GIRL 39L

EPD's	
BW	5.7
WW	45.0
YW	80.4
Milk	21.5
TM	44.0
REA	0.24
Fat	-0.030
Marb.	0.01

A mossy yellow haired bull that is deep bodied yet clean fronted. Being out of a Kahlua daughter assures milk.

**50**

**LCI 68U RED STANDARD 17U**

C02911491 LCI 17U January 26 2008  
 BW: 115 Adj WWT: 771 YWT: 1450

JNHR RED STANDARD 283M

**JNHR RED STANDARD 68R**

PDHR 3X STAND LASS 72B  
 PDHR 923Y STAND LAD 66F

**LCI BRITTANY 27J**

LCI SUPERIOR LASS 83G

EPD's	
BW	9.3
WW	59.7 <small>Top 2%</small>
YW	101.3 <small>Top 1%</small>
Milk	13.9
TM	43.8
REA	0.18
Fat	0.007
Marb.	-0.02

17U is all bull! Stout and loads of performance! His dam is a grand old matron with 9 consecutive calves to her record and is still sound as a dollar.





**51**

**LCI 68R RED STANDARD 118U**

C02911719 LCI 118U Feb. 02 2008  
 BW: 105 Adj WWT: 762 YWT: 1500

EPD's	
BW	8.2
WW	58.5 <small>Top 3%</small>
YW	106.2 <small>Top 1%</small>
Milk	15.2
TM	44.5
REA	0.23
Fat	0.005
Marb.	-0.03

JNHR RED STANDARD 283M  
**JNHR RED STANDARD 68R**  
 PDHR 3X STAND LASS 72B  
 MW PRAIRIE 68H  
**LCI 68H PRAIRIE LASS 115N**  
 LCI TAMMY 224H

Performance bred into 118U. He definitely will add pounds to a calf crop. 115N has a good 107R bull calf in the sale, LOT 3. Look her up sale day as she will be on display.

**52**

**LCI 68R RED STANDARD 32U**

C02911508 LCI 32U January 26 2008  
 BW: 98 Adj WWT: 665 Adj YWT: 1156

EPD's	
BW	6.3
WW	44.8
YW	64.4
Milk	11.1
TM	33.5
REA	0.26
Fat	-0.032
Marb.	-0.10

JNHR RED STANDARD 283M  
**JNHR RED STANDARD 68R**  
 PDHR 3X STAND LASS 72B  
 96 ANDY 81F  
**LCI 81F ANDY GIRL 88L**  
 LCI 86U LOUISE LASS 198X

You can certainly see a lot of the sire 68R in this bull, excellent structure and feet. His dam, 88L is a "steady eddie", a moderate framed, easy fleshing cow with a well shaped udder.

**53**

**LCI 125P OSWALD 92U**

C02911613 LCI 92U February 22 2008  
 BW: 99 Adj WWT: 667 YWT: 1140

EPD's	
BW	5.2
WW	40.4
YW	69.0
Milk	23.0 <small>Top 10%</small>
TM	43.2
REA	0.02
Fat	0.022
Marb.	0.11 <small>Top 15%</small>

LCI BD OSWALD 6H  
**LCI 6H WALDO 125P**  
 LCI 82H MISS KAHLUA 146K  
 K 64H RIBSTONE LAD 157K  
**LCI 157K RIBSTONE GIRL 126N**  
 LCI ALBERTA STARLIGHT 30J

I like this bull a lot as he is short marked, clean fronted, yet thick. He is a full brother to our 71S herd bull.

**54**

**LCI 125P OSWALD 195U**

C02912580 LCI 195U March 18 2008  
 BW: 105 Adj WWT: 709 YWT: 1200

EPD's	
BW	7.4
WW	46.2
YW	83.9 <small>Top 15%</small>
Milk	21.2 <small>Top 15%</small>
TM	44.3
REA	0.18
Fat	0.001
Marb.	0.02

LCI BD OSWALD 6H  
**LCI 6H WALDO 125P**  
 LCI 82H MISS KAHLUA 146K  
 SMITHSTON TAM O'SHANTER ET 2  
**LCI T097 OLYMPIC 107M**  
 LCI 98A SOUTH ALTA 276E

A 125P son with extra pigment and an attractive profile. You will put a good group of females together out of 195U.

**55**

**LCI BD 125P WALDO 316U**

C02911734 LCI B 316U March 10 2008  
 BW: 98 Adj WWT: 702 YWT: 1100

EPD's	
BW	5.5
WW	40.3
YW	62.1
Milk	23.6 <small>Top 10%</small>
TM	43.8
REA	-0.01
Fat	0.029
Marb.	0.00

LCI BD OSWALD 6H  
**LCI 6H WALDO 125P**  
 LCI 82H MISS KAHLUA 146K  
 LCI KAHLUA 82H  
**LCI BD 82H KAHLUA LADY 150N**  
 LCI 6H OSWALD LASSY 61L

A deep bodied extra thick bull with excellent feet and legs. Also top milk numbers.

**56**

**LCI 68R RED STANDARD 113U**

C02911502 LCI 113U February 04 2008  
 BW: 98 Adj WWT: 742 YWT: n/a

EPD's	
BW	5.4
WW	46.3
YW	70.2
Milk	14.2
TM	37.3
REA	0.09
Fat	0.004
Marb.	-0.05

JNHR RED STANDARD 283M  
**JNHR RED STANDARD 68R**  
 PDHR 3X STAND LASS 72B  
 LCI DUNBAR 172H  
**LCI 172H DUNBAR GIRL 138K**  
 LCI JUSTICE MISS 250D

The length in this bull adds up to pounds. His dam has passed the "test of time" and still going strong!

**57****LCI 107R RIBSTONE 126U**C02911700 LCI 126U February 01 2008  
BW: 85 Adj WWT: 703 YWT: 1140

EPD's	
BW	4.1
WW	48.6
YW	73.0
Milk	24.5 <small>Top 5%</small>
TM	48.8
REA	0.32 <small>Top 25%</small>
Fat	-0.031
Marb.	0.24 <small>Top 25%</small>

K 64H RIBSTONE LAD 157K

**LCI 157K RIBSTONE 107R**LCI 82H KAHLUA ANDIE 174M  
LCI 157K RIBSTONE 46P**LCI 46P RIBSTONE GAL 118S**

LCI 90M MRS KING 111P

Just look at the EPD's on this bull as they are all well above average. He is in the top 25% of the breed for both rib eye area and marbling. A 85 lb birth weight and 700 lb weaning weight.

**58****LCI 4P RIBSTONE 102U**C02911622 LCI 102U February 11 2008  
BW: 96 Adj WWT: 741 YWT: 1340

EPD's	
BW	6.2
WW	56.7 <small>Top 4%</small>
YW	95.8 <small>Top 3%</small>
Milk	15.6
TM	44.0
REA	0.32
Fat	-0.035
Marb.	-0.01

K 64H RIBSTONE LAD 157K

**LCI 157K RIBSTONE 4P**LCI SUPERIOR GIRL 121H  
LCI 77H REFORM 148L**LCI 148L REFORM LASS 28P**

LCI 81F ANDIE 214K

4P throws cattle with added performance and thickness. His females are extra ordinary! Use this bull to get more pounds on your steer calves, along with raising a herd of great females!

**59****LCI 68R RED STANDARD 72U**C02911499 LCI 72U February 02 2008  
BW: 91 Adj WWT: 610 YWT: 1180

EPD's	
BW	5.1
WW	37.9
YW	62.7
Milk	15.7
TM	34.6
REA	-0.06
Fat	0004
Marb.	-0.09

JNHR RED STANDARD 283M

**JNHR RED STANDARD 68R**PDHR 3X STAND LASS 72B  
LCI KAHLUA 82H**LCI 82H MISS KAHLUA 91K**

LCI SUPERIOR GIRL 108H

I really appreciate the length of body and correctness in these 68R cattle. 72U is out of the tremendous old 91K cow.

**60****LCI 52N RIBSTONE 31U**C02911624 LCI 31U January 28 2008  
BW: 107 Adj WWT: 756 YWT: 1300

EPD's	
BW	6.5
WW	53.1 <small>Top 10%</small>
YW	90.0 <small>Top 5%</small>
Milk	25.4 <small>Top 5%</small>
TM	52.0 <small>Top 3%</small>
REA	0.24
Fat	-0.035
Marb.	0.16 <small>Top 16%</small>

K 64H RIBSTONE LAD 157K

**LCI 157K RIBSTONE 52N**

LCI 172H DESTINY 215K

K 64H RIBSTONE LAD 157K

**LCI 157K RIBSTONE LASS 30P**

LCI ALBERTA STARLIGHT 30J

Double bred 157K. If you want extra milk, performance and a bull that will add carcass then 31U could be the boy.

**61****LCI 68R RED STANDARD 25U**C02911514 LCI 25U January 24 2008  
BW: 109 Adj WWT: 770 YWT: 1510

EPD's	
BW	8.3
WW	57.8 <small>Top 4%</small>
YW	92.2 <small>Top 5%</small>
Milk	16.8
TM	45.7
REA	0.29
Fat	-0.007
Marb.	-0.18

JNHR RED STANDARD 283M

**JNHR RED STANDARD 68R**PDHR 3X STAND LASS 72B  
LCI SUPERIOR 31H**LCI KD JASMINE 195L**

LCI KD CANDY 107E

A broad chested deep bodied bull that will breed pounds.



## Reference Sire for Angus Bulls & Heifers

**N BAR EMULATION EXT****RS****BENCHMARK EMULATION EXT**LAA 45S 1346346 January 25 2006  
BW: 79 lbs Adj 205: 615 lbs Adj. YWT: 1145 I

EPD's	
BW	-0.6
WW	39
YW	69
Milk	20
TM	40
YG	30
SC	0.12
%IMF	0.06
REA	0.08
FAT	0.038

EMULATION N BAR

**N BAR EMULATION EXT**N BAR PRIMROSE 2424  
CONNEALY DATELINE**MVF TIBBIE 80J**

MVF TIBBIE 14C

This bull was purchased from Benchmark Angus as a sale feature. An ET bull out of a proven superior female maker N Bar Emulation EXT, one of the corner stone Angus herdsires. 80J, his dam is a moderate framed, good uddered cow that had stood the test of time. She is one of their top donor cows.

# Angus Bull Calves

## FALL ANGUS EPDS BULL AVERAGES

BW	WW	YW	Milk	TM	YG
+3.1	+39	+70	+16	+36	+31



123W and 150W are full blood brothers out of 109T and sisters out of our flush cow 1N. They are full sisters to our 102T sire and what a gorgeous pair! Moderate framed, super udder, easy fleshing with lots of middle. They raised calves with reasonable birth weights to weaning weights of 850 lbs and 819 lbs. 123W and 150W are like peas in a pod. Extra muscle, clean fronted, a foot in each corner along with quiet dispositions. All this coming from both sides of the pedigree.



**62**

### LCI 109T FREEDOM 123W

LCI 123W 1520913 January 31 2009  
 BW: 92 lbs. Adj 205: 850 lbs

WESTERN FREEDOM 505

### LCI 505 FREEDOM 109T

LCI NEW FRONTIER LADY 67P  
 THREE TREES PRIME CUT 0145

### LCI 0145 LINDA 30S

LCI 6G LINDA 1N

**EPD's**

BW	3.5
WW	49
YW	86
Milk	19
TM	43
YG	38

**63**

### LCI 109T FREEDOM 150W

LCI 150W 1520919 February 03 2009  
 BW: 80 lbs. Adj 205: 819 lbs

WESTERN FREEDOM 505

### LCI 505 FREEDOM 109T

LCI NEW FRONTIER LADY 67P  
 THREE TREES PRIME CUT 0145

### LCI 0145 LINDA 76S

LCI 6G LINDA 1N

**EPD's**

BW	3.4
WW	48
YW	86
Milk	18
TM	42
YG	38





**64**

EPD's	
BW	3.0
WW	42
YW	78
Milk	17
TM	38
YG	36

**LCI 9015 STRATEGY 179W**

LCI 179W 1520921 February 5 2009  
 BW: 94 lbs. Adj 205: 794 lbs

S A F FOCUS OF E R

**S A F STRAGERY 9015**

S A F ROYAL QUEEN 5084

WINDOVER COMMITMENT 2K

**WILLDON VALENTINE MERCEDES 70M**

WILLDON VALENTINA ROSHUMBA 3G

This Strategy calf is stylish, clean fronted, yet thick and has a deep hind quarter. 70M is probably our heaviest Angus cow that is not large framed but really thick and easy fleshing. Expect extra carcass value and super females being out of Strategy.



**65**

EPD's	
BW	4.6
WW	53
YW	93
Milk	19
TM	45
YG	40

**LCI 5R FREEDOM 197W**

LCI 197W 1520900 January 16 2009  
 BW: 85 lbs. Adj 205: 815 lbs

TC FREEDOM 104

**WESTERN FREEDOM 505**

WESTERN MISSUE 5N

B/R NEW FRONTIER 095

**LCI NEW FRONTIER LADY 67P**

LCI FAITH 4L

Full brother to our 109T herd bull. 67P consistently raises one of our best bulls. She has a short gestation as did her dam and that is the reason for her short ears. You have to like a 85 lb birth weight and a weaning weight of 815 lb.



112W - lot 65 pictured above and dam pictured right

**67**

EPD's	
BW	2.0
WW	42
YW	76
Milk	18
TM	39
YG	

**LCI 102T PRIME CUT 90W**

LCI 90W 1520910 January 27 2009  
 BW: 75 lbs. Adj 205: 761 lbs

THREE TREES PRIME CUT 0145

**LCI 0145 PRIME CUT 102T**

LCI 6G LINDA 1N

IRONWOOD NEW LEVEL

**LCI NEW LEVEL MISS 101T**

LCI MONARCH GAL 106P

A bull that is deep chested, good footed, and all meat. He is out of a first calf New Level daughter.



**66**

EPD's	
BW	3.6
WW	50
YW	88
Milk	18
TM	43
YG	

**LCI 102T PRIME CUT 112W**

LCI 112W 1520938 February 25 2009  
 BW: 76 lbs. Adj 205: 815 lbs

THREE TREES PRIME CUT 0145

**LCI 0145 PRIME CUT 102T**

LCI 6G LINDA 1N

WESTERN FREEDOM 505

**LCI MISS FREEDOM 152T**

LCI JEWELS ET 67R

A moderate framed super thick bull just like his dad. Almost a March calf with a 76 lb birth weight. Look up his dam, she is the right kind.

**68**

EPD's	
BW	3.4
WW	47
YW	82
Milk	18
TM	42
YG	

**LCI 102T PRIME CUT 91W**

LCI 91W 1520935 February 21 2009  
 BW: 82 lbs. Adj 205: 773 lbs

THREE TREES PRIME CUT 0145

**LCI 0145 PRIME CUT 102T**

LCI 6G LINDA 1N

WESTERN FREEDOM 505

**LCI MISS FREEDOM 132T**

LCI ANCHOR ROSE ET 75R

A bull that put a lot to the table...light birth weight, top performance, and will sire the right type of female. Take a look at his dam sale day, isn't she something!

**69**

**LCI 102T PRIME CUT 232W**  
LCI 232W 1520942 March 14 2009  
BW: 95 lbs. Adj 205: 794 lbs

EPD's	
BW	3.0
WW	42
YW	77
Milk	16
TM	37
YG	

THREE TREES PRIME CUT 0145  
**LCI 0145 PRIME CUT 102T**  
LCI 6G LINDA 1N  
B/R NEW FRONTIER 095  
**LCI JEWELS ET 67R**  
GH MONARCH ROSE 18K

One of the youngest in the sale yet stands right in there with the group. Being out of 102T he will grow into himself and have a great future.

**71**

**LCI 5R FREEDOM 117W**  
LCI 117W 1520918 February 03 2009  
BW: 82 lbs. Adj 205: 766 lbs

EPD's	
BW	3.1
WW	56
YW	99
Milk	17
TM	45
YG	43

TC FREEDOM 104  
**WESTERN FREEDOM 505**  
WESTERN MISSIE 5N  
THREE TREES PRIME CUT 0145  
**LCI 0145 DESTINY 136S**  
LCI NEW FRONTIER LADY 45P

A Freedom Prime Cut cross calf with EPD's well above breed average for performance and milk. A strong meaty bull.

**73**

**LCI 109T FREEDOM 320W**  
LCIB 320W 1521199 January 31 2009  
BW:87 lbs. Adj 205: 781lbs

EPD's	
BW	4.1
WW	44
YW	77
Milk	20
TM	42
YG	32

WESTERN FREEDOM 505  
**LCI 505 FREEDOM 109T**  
LCI NEW FRONTIER LADY 67P  
EBON HILL BLACK DESIGN 41'03  
**EBON HILL COUNTESS 510'05**  
EBON HILL COUNTESS 500'93

Bred in performance, yet light birth weight. 510R is a conservative framed cow that puts a lot into her calves.

**75**

**LCI 109T FREEDOM 138W**  
LCI 138W 1520911 January 31 2009  
BW: 82 lbs. Adj 205: 798 lbs

EPD's	
BW	4.4
WW	47
YW	86
Milk	15
TM	38
YG	39

WESTERN FREEDOM 505  
**LCI 505 FREEDOM 109T**  
LCI NEW FRONTIER LADY 67P  
S A R NEW TREND 4100 2080  
**ANNIE K OF PEAK DOT 434S**  
DOUBLE AA ANNIE K 213'97

His dam is a well put together Peak Dot cow. Again a calf with growth and a light birth weight.

**77**

**LCI 109T FREEDOM 127W**  
LCI 127W 1520926 February 09 2009  
BW: 84 lbs. Adj 205: 778 lbs

EPD's	
BW	2.7
WW	44
YW	76
Milk	19
TM	41
YG	32

WESTERN FREEDOM 505  
**LCI 505 FREEDOM 109T**  
LCI NEW FRONTIER LADY 67P  
BON VIEW NEW DESIGN 1407  
**LCI NEW DESIGN MISS 143P**  
SANDY BAR LINDA 6G

A stout bull that is put together extremely well. His New Design dam is a moderate framed cow with a well shaped udder.

**70**

**LCI 5R FREEDOM 207W**  
LCI 207W 1520909 January 26 2009  
BW: 92 lbs. Adj 205: 739 lbs

EPD's	
BW	4.2
WW	55
YW	95
Milk	14
TM	41
YG	40

TC FREEDOM 104  
**WESTERN FREEDOM 505**  
WESTERN ISSUE 5N  
B/R NEW FRONTIER 095  
**LCI NEW FRONTIER LADY 45P**  
LCI DESTINY 1M

Out of the 505 bull means extra pounds at weaning time, yet have a reasonable birth weight. Freedom cattle are also known for excellent dispositions.

**72**

**LCI 9015 STRATEGY 218W**  
LCI 218W 1520905 January 21 2009  
BW: 80 lbs. Adj 205: 766 lbs

EPD's	
BW	1.9
WW	53
YW	97
Milk	18
TM	45
YG	44

S A F FOCUS OF E R  
**S A F STRAGERY 9015**  
S A F ROYAL QUEEN 5084  
THREE TREES PRIME CUT 0145  
**LCI 0145 FAITH 137S**  
LCI NEW FRONTIER LADY 67P

A bull out of Strategy, that is known for light birth weight, performance, and is a carcass bull with super marbling. You surely can use this 80 lb birth weight bull on heifers

**74**

**LCI 109T FREEDOM 319W**  
LCIB 319W 152197 January 18 2009  
BW: 88 lbs. Adj 205: 830 lbs

EPD's	
BW	4.0
WW	48
YW	82
Milk	17
TM	40
YG	35

WESTERN FREEDOM 505  
**LCI 505 FREEDOM 109T**  
LCI NEW FRONTIER LADY 67P  
EBON HILL BLACK DESIGN 41'03  
**EBON HILL BLACKCAP 390'05**  
EBON HILL BLACKCAP 290'97

A ¾ brother to 320W. You have to admire these two Ebon Hill moderate framed cows for what they put into their calves.

**76**

**LCI 109T FREEDOM 220W**  
LCI 220W 1520937 February 22 2009  
BW:92 lbs. Adj 205: 722 lbs

EPD's	
BW	4.4
WW	48
YW	86
Milk	15
TM	39
YG	38

WESTERN FREEDOM 505  
**LCI 505 FREEDOM 109T**  
LCI NEW FRONTIER LADY 67P  
B/R NEW FRONTIER 095  
**LCI NEW FRONTIER LADY 153P**  
GH MONARCH ROSE 18K

This fellow is just a youngster out of a very special New Frontier dam.

**78**

**LCI 109T FREEDOM 166W**  
LCI 166W 1520933 February 20 2009  
BW: 92 lbs. Adj 205: 763 lbs

EPD's	
BW	3.7
WW	48
YW	86
Milk	19
TM	43
YG	38

WESTERN FREEDOM 505  
**LCI 505 FREEDOM 109T**  
LCI NEW FRONTIER LADY 67P  
IRONWOOD NEW LEVEL  
**LCI 9399 ROSE 143S**  
LCI NEW FRONTIER LADY 148P

A big strapping calf that will breed in pounds and put a middle in his calves. His dam also has a good yearling bull in the sale LCI 143U.

**79****LCI 109T FREEDOM 188W**LCI 188W 1520922 February 06 2009  
BW: 90 lbs. Adj 205: 859 lbs**No  
EPD's  
available**

WESTERN FREEDOM 505

**LCI 505 FREEDOM 109T**LCI NEW FRONTIER LADY 67P  
CUDLOBE YELLOWSTONE 1'03**LCI JASMINE ET 53R**

LCI FAITH 4L

This bull has the heaviest weaning weight in our herd of 859 lbs. His dam is a heavy milking Yellowstone cow, yet has a maintenance free udder.

**Lot 81 - 132U****82****LCI 45S EMULATION 191U**LCI 191U 1435028 March 14 2008  
BW: 88lbs. Adj 205: 861lbs Adj. YWT: 1383**EPD's**

BW	1.8
WW	40
YW	73
Milk	16
TM	36
YG	33

N BAR EMULATION EXT

**BENCHMARK EMULATION EXT**

MVF TIBBIE 80J

B/R NEW FRONTIER 095

**LCI NEW FRONTIER LADY 153P**

GH MONARCH ROSE 18K

A bull with early growth pattern and moderate mature frame size. It is bred into him from both his parents. A 88 lb birth weight and EPD BW well below breed average. Again a bull to use on heifers.

**Lot 84 - 183U****84****LCI 45S EMULATION 183U**LCI 183U 1435031 March 21 2008  
BW: 90 lbs Adj 205: 840 lbs Adj. YWT: 1332**EPD's**

BW	0.0
WW	36
YW	63
Milk	20
TM	38
YG	28

N BAR EMULATION EXT

**BENCHMARK EMULATION EXT**

MVF TIBBIE 80J

BON VIEW NEW DESIGN 1407

**LCI NEW DESIGN MISS 143P**

SANDY BAR LINDA 6G

A light birth and milk pedigree. An easy fleshing thick made bull that will produce excellent females.

**80****LCI 109T FREEDOM 135W**LCI 135W 1520899 January 12 2009  
BW: 60 lbs. Adj 205: 718 lbs**EPD's**

BW	4.4
WW	48
YW	82
Milk	16
TM	40
YG	35

WESTERN FREEDOM 505

**LCI 505 FREEDOM 109T**LCI NEW FRONTIER LADY 67P  
STEVENSON AMBUSH 9731**BENCHMARK LAVENDER LADY 4103**

BENCHMARK LAVENDER LADY 133

A twin bull calf out of a Benchmark cow that has been consistent producer. Last years bull went to K &amp; A Thomas Farms.

**81****LCI 45S EMULATION 132U**LCI 132U 1435015 February 05 2008  
BW: 80 lbs. Adj 205: 837 lbs Adj. YWT: 1405**EPD's**

BW	1.3
WW	43
YW	76
Milk	20
TM	42
YG	33

N BAR EMULATION EXT

**BENCHMARK EMULATION EXT**

MVF TIBBIE 80J

THREE TREES PRIME CUT 0145

**LCI 0145 LINDA 92S**

LCI 6G LINDA 1N

This fellow was used in our own herd. He's above breed average for WW, YW and Milk, yet he is a below average for birth weight. 92S is a super young cow that goes back to our 1N flush cow. You can use 132U on heifers, yet have pounds on your calves come fall.

**Lot 83 - 143U****83****LCI 45S EMULATION 143U**LCI 143U 1435014 February 04 2008  
BW: 70 lbs Adj 205: 760 lbs Adj. YWT: 1198**EPD's**

BW	0.2
WW	37
YW	71
Milk	19
TM	38
YG	33

N BAR EMULATION EXT

**BENCHMARK EMULATION EXT**

MVF TIBBIE 80J

IRONWOOD NEW LEVEL

**LCI 9399 ROSE 143S**

LCI NEW FRONTIER LADY 148P

A super carcass bull with EPD's for both REA and marbling way above average. A 70 lb birth weight and a below average EPD for birth weight.

**85****LCIB 68S DATELINE 311U**LCIB 311U 1435036 February 09 2008  
BW: 91lbs. Adj 205: 813lbs. Adj. YWT: 1335**EPD's**

BW	4.8
WW	50
YW	85
Milk	17
TM	42
YG	36

VERMILION DATELINE 7078

**EBON HILL 7080 DATELINE 68'06**

EBON HILL LAVENDER LADY 453'97

EBON HILL BLACK DESIGN 41'03

**EBON HILL BLACKCAP 390'05**

EBON HILL BLACKCAP 290'97

A performance bull that is out of a good Ebon Hill cow. A real pasture bull that can move out and travel.

## Service Sire for Hereford Heifers

SS

### R 0041 NORTH STAR 40U

A42905988 40U March 5, 2008  
 BW: 82 Adj. WWT: 822 Adj. YWT: 1375

EPD's	
BW	3.5
WW	46.2
YW	70.1
Milk	23.5
TM	46.6
REA	0.63 <small>Top 3%</small>
Fat	-0.42
Marb.	0.01

CJH L1 DOMINO 821

### CJH L1 DOMINO 0041

CJH STARLET LASS 151  
 SR BOWMAN 263

### R STARLETTE 511

R STARLETTE 112

A new addition this spring! 40U was the high selling bull in the Ridder ranch sale in Nebraska. We were looking for a bull with lighter birth weight yet good performance and milk. A bull with superior carcass. 40U fit the bill and surpassed our expectations.

A short marked fully pigmented athletic bull that is a strong pasture bull. We are looking forward to his first calf crop. Note...selling all heifers bred to him but we have cows AI'd to him also. All heifers were exposed to 40U April 17 to June 1<sup>st</sup> and guaranteed to be safe in calf.



## Hereford Bred Heifers



86

### LCI 107R RIBSTONE LASS 135U

C02911707 LCI 135U January 17 2008  
 BW: 84 Adj. WWT: 756 Adj. YWT: 981

EPD's	
BW	5.2
WW	58.2 <small>Top 3%</small>
YW	98.4 <small>Top 2%</small>
Milk	26.6 <small>Top 4%</small>
TM	55.7
REA	0.48 <small>Top 5%</small>
Fat	-0.023
Marb.	0.10 <small>Top 20%</small>

K 64H RIBSTONE LAD 157K

### LCI 157K RIBSTONE 107R

LCI 82H KAHLUA ANDIE 174M  
 LCI 157K RIBSTONE 46P

### LCI 46P RIBSTONE LASS 153S

LCI 9M MRS KING 191P

This heifer has two shots of 157K. 153S is a model Hereford cow with extra hair, easy fleshing and brings home a top calf every year. This heifer is capable of raising herdsires!

87

### LCI 107 RIBSTONE LASS 127U

C02911696 LCI 127U March 11 2008  
 BW: 80 Adj. WWT: 721 Adj. YWT: 821

EPD's	
BW	4.9
WW	53.5 <small>Top 10%</small>
YW	85.0 <small>Top 15%</small>
Milk	24.4 <small>Top 10%</small>
TM	51.1 <small>Top 3%</small>
REA	0.31 <small>Top 20%</small>
Fat	-0.029 <small>Top 4%</small>
Marb.	0.04 <small>Top 40%</small>

K 64H RIBSTONE LAD 157K

### LCI 157K RIBSTONE 107R

LCI 82H KAHLUA ANDIE 174M  
 BP ROBIN HOOD 6N

### LCI 6N RANCHER LADY 106S

LCI T097 TAM O'LASS 43N

A pretty neat deep ribbed moderate framed structurally correct heifer.



LCI is a proud supporter of the  Canadian Junior Hereford Association

88

### LCI 31R STANMORE LASS 173U

C02911671 LCI 173U February 18 2008  
 BW: 89 Adj. WWT: 725 Adj. YWT: 872

EPD's	
BW	7.1
WW	63.3 <small>Top 1%</small>
YW	98.7 <small>Top 2%</small>
Milk	20.2 <small>Top 25%</small>
TM	51.8
REA	0.24 <small>Top 35%</small>
Fat	-0.027
Marb.	0.14

AGA 121G STANMORE 20J

### LBH 20J STANMORE 31R

LBH 10S STAN LASS 34N  
 LCI 157K RIBSTONE 4P

### LCI 4P GILLIAN 19S

LCI 9640 PRINCESS 214L

Ouch, hard to part with! 19S is an elite cow, she has a very good bull calf in the sale pen this year. She will be on display sale day.



**89**

**LCI 4P RIBSTONE GAL 107U**  
 C02911620 LCI 107U February 11 2008  
 BW: 92 Adj WWT: 717 Adj YWT: 864

EPD's	
BW	4.9
WW	52.6 <small>Top 10%</small>
YW	87.7 <small>Top 10%</small>
Milk	21.2 <small>Top 20%</small>
TM	47.5 <small>Top 10%</small>
REA	0.24 <small>Top 35%</small>
Fat	-0.013
Marb.	0.17 <small>Top 10%</small>

K 64H RIBSTONE LAD 157K  
**LCI 157K RIBSTONE 4P**  
 LCI SUPERIOR GIRL 121H  
 K 64H RIBSTONE LAD 157K  
**LCI 157K RIBSTONE GIRL 214N**  
 LCI ROYAL QUEEN 138C

A heifer with bred in extra milk, good performance and top carcass data. Also is moderate framed and thick.

**90**

**LCI 4P RIBSTONE GAL 202U**  
 C02911545 LCI 202U March 28 2008  
 BW: 94 Adj WWT: 729 Adj YWT: 978

EPD's	
BW	6.0
WW	62.3 <small>Top 1%</small>
YW	105.2 <small>Top 1%</small>
Milk	17.8
TM	49.0 <small>Top 5%</small>
REA	0.31 <small>Top 25%</small>
Fat	0.011
Marb.	0.11 <small>Top 15%</small>

K 64H RIBSTONE LAD 157K  
**LCI 157K RIBSTONE 4P**  
 LCI SUPERIOR GIRL 121H  
 LCI KAHLUA 82H  
**LCI 82H KAHLUA GIRL 147M**  
 LCI 172H DUNBAR GIRL 53K

A volume heifer out of 4P with a performance pedigree, yet a good milk EPD. Her dam is a moderate framed good Kahlua daughter.



**91**

**LCI 107R RIBSTONE LASS 145U**  
 C02911704 LCI 145U March 10 2008  
 BW: 80 Adj WWT: 747 Adj YWT: 933

EPD's	
BW	4.3
WW	57.5 <small>Top 4%</small>
YW	89.6 <small>Top 6%</small>
Milk	26.8 <small>Top 4%</small>
TM	55.6 <small>Top 1%</small>
REA	0.45 <small>Top 10%</small>
Fat	-0.020 <small>Top 4%</small>
Marb.	0.22 <small>Top 25%</small>

K 64H RIBSTONE LAD 157K  
**LCI 157K RIBSTONE 107R**  
 LCI 82H KAHLUA ANDIE 174M  
 LCI 157K RIBSTONE 46P  
**LCI 46P RIBSTONE GAL 145S**  
 LCI 90M MRS KING 65P

Bred royally! Moderate framed, feminine and thick. From a super cow line! Could you write better EPD's!!!

**92**

**LCI BD 107R RIBSTONE LASS 328U**  
 C02911771 LCIB 328U Feb. 23 2008  
 BW: 85 Adj WWT: 664 Adj YWT: 856

EPD's	
BW	5.3
WW	53.4 <small>Top 10%</small>
YW	90.2 <small>Top 6%</small>
Milk	23.7 <small>Top 5%</small>
TM	50.4 <small>Top 5%</small>
REA	0.33 <small>Top 20%</small>
Fat	-0.028
Marb.	0.02

K 64H RIBSTONE LAD 157K  
**LCI 157K RIBSTONE 107R**  
 LCI 82H KAHLUA ANDIE 174M  
 BP ROBIN HOOD 6N  
**LCI BD 6N PENNY 414S**  
 LCI BD 82H KAHLUA LADY 150N

Pretty as a picture! She is hard to fault and what a top EPD profile for the breed.



**93**

**LCI BD RIBSTONE LASS 301U**

C02911735 LCIB 301U Feb. 18 2008  
 BW: 105 Adj WWT: 723 Adj YWT: 944

EPD's	
BW	7.8
WW	60.6 <sup>Top 2%</sup>
YW	107.7 <sup>Top 1%</sup>
Milk	17.6
TM	47.9
REA	0.24
Fat	-0.008
Marb.	0.04

K 64H RIBSTONE LAD 157K

**LCI 157K RIBSTONE 4P**

LCI SUPERIOR GIRL 121H  
 LCI KAHLUA 82H

**LCI BD 82H NAVAJO 164N**

LCI 6H OSWALD LASSY 163L

A 4P and Kahlua cross assures milk and performance. A pleasing profile heifer!

**94**

**LCI BD RIBSTONE LASS 309U**

C02911749 LCI B 309U Feb. 01 2008  
 BW: 95 Adj WWT: 710 YWT: 1002

EPD's	
BW	7.4
WW	54.2 <sup>Top 15%</sup>
YW	111.3 <sup>Top 1%</sup>
Milk	19.4 <sup>Top 25%</sup>
TM	46.5
REA	0.32 <sup>Top 25%</sup>
Fat	-0.036
Marb.	0.07 <sup>Top 25%</sup>

K 64H RIBSTONE LAD 157K

**LCI 157K RIBSTONE 52N**

LCI 172H DESTINY 215K  
 FE 17D SUPREME SILVER 91F

**BP 91F RUBY 72L**

BP RUBY 110C

An angular sweet fronted heifer. Explosive growth EPD's, good milk, big ribeye, and good marbling.



**95**

**LCI 83S RIBSTONE GAL 29U**

C02920977 LCI 29U January 20 2008  
 BW: 86 Adj WWT: 693 Adj. YWT: 875

EPD's	
BW	4.6
WW	51.5 <sup>Top 5%</sup>
YW	86.8 <sup>Top 5%</sup>
Milk	20.1 <sup>Top 25%</sup>
TM	45.9 <sup>Top 15%</sup>
REA	0.25
Fat	0.002
Marb.	0.04

K 64H RIBSTONE LAD 157K

**LCI 157K RIBSTONE 83S**

LCI 82H MISS KAHLUA 152M  
 JNHR DIAMOND 99D

**LCI SUPERIOR 23H**

LCI VOLTAGE LASS 201F

Short marked and thick just the way 83S builds them. 23H is a grand old 99D cow that is still going strong in our herd.

**96**

**LCI 83S MARINA 42U**

C02920979 LCI 42U January 31 2008  
 BW: 110 Adj WWT: 753 Adj. YWT: 968

EPD's	
BW	8.0
WW	57.9 <sup>Top 3%</sup>
YW	100.8 <sup>Top 2%</sup>
Milk	21.0 <sup>Top 20%</sup>
TM	50.0 <sup>Top 5%</sup>
REA	0.21
Fat	-0.003
Marb.	0.07 <sup>Top 25%</sup>

K 64H RIBSTONE LAD 157K

**LCI 157K RIBSTONE 83S**

LCI 82H MISS KAHLUA 152M  
 LCI BD OSWALD 6H

**BRABETH 6H MARINA 3L**

BRABETH 99D GEM 9G

A sweet heifer that is big barreled, yet super feminine. Out of a top producing cow we purchased from Max and Gail Newby (Brabeth Farms), Chilliwack, BC.



97

**LCI BD 4P RIBSTONE GAL 310U**

C02912583 LCIB 310U January 26 2008  
 BW: 90 Adj WWT: 676 Adj YWT: 872

EPD's	
BW	5.6
WW	56.0 <small>Top 5%</small>
YW	94.3 <small>Top 4%</small>
Milk	12.8
TM	40.8
REA	0.30 <small>Top 15%</small>
Fat	-0.018
Marb.	0.11 <small>Top 15%</small>

K 64H RIBSTONE LAD 157K

**LCI 157K RIBSTONE 4P**

LCI SUPERIOR GIRL 121H  
 CC 7Z LAREDO 182E

**BP 182E MONTANA LADY 197L**

WB MONTANA LADY 17E

A deep bodied clean fronted, feminine heifer out of a hard working Bar Pipe cow.



98

**LCI 4P RIBSTONE LASS 111U**

C02911630 LCI 111U February 12 2008  
 BW: 97 Adj WWT: 688 Adj YWT: 874

EPD's	
BW	7.2
WW	57.1 <small>Top 4%</small>
YW	92.8 <small>Top 5%</small>
Milk	17.9
TM	46.5 <small>Top 10%</small>
REA	0.24
Fat	-0.015
Marb.	0.02

K 64H RIBSTONE LAD 157K

**LCI 157K RIBSTONE 4P**

LCI SUPERIOR GIRL 121H  
 LCI 6K KINGSTON 90M

**LCI 90M MRS KING 65P**

LCI 104K DUNBAR MISS 157M

Her dam, 65P has a bull calf in the sale Lot 9 this year. 4P daughters have proven to be elite cows in our herd.



99

**LCI 68R STANDARD GAL 23U**

C02911653 LCI 23U January 27 2008  
 BW: 85 Adj WWT: 752 Adj YWT: 913

EPD's	
BW	5.5
WW	53.0 <small>Top 4%</small>
YW	83.6 <small>Top 15%</small>
Milk	17.3
TM	43.8
REA	0.19
Fat	0.00
Marb.	0.08 <small>Top 20%</small>

JNHR RED STANDARD 283M

**JNHR RED STANDARD 68R**

PDHR 3X STAND LASS 72B  
 K 64H RIBSTONE LAD 157K

**LCI 157K RIBSTONE GAL 93R**

LCI 172H DUNBAR GIRL 32M

A red eyed heifer with volume. Again out of an exceptional 157K daughter.



100

**LCI RIBSTONE LADY 121U**

C02920980 LCI 121U Feb. 04 2008  
 BW: 98 Adj WWT: 662 Adj YWT: 851

EPD's	
BW	7.0
WW	48.2
YW	83.2 <small>Top 15%</small>
Milk	22.1 <small>Top 15%</small>
TM	46.2 <small>Top 15%</small>
REA	0.23
Fat	-0.011
Marb.	0.06

K 64H RIBSTONE LAD 157K

**LCI 157K RIBSTONE 83S**

LCI 82H MISS KAHLUA 152M  
 SMITHSTON TAM O'SHANTER ET2

**LCI T097 TAM O'LASS 118N**

BP MISS MARK DONALD 237A

A deep chested heifer, yet feminine with very good milk EPD's and good carcass data.

**102****LCI 68R STANDARD LASS 27U**C02911659 LCI 27U February 01 2008  
BW: 103 Adj WWT: 755 Adj YWT: 942

EPD's	
BW	8.3
WW	57.4 <small>Top 4%</small>
YW	93.3 <small>Top 4%</small>
Milk	17.8
TM	46.5
REA	0.25
Fat	-0.009
Marb.	0.08

JNHR RED STANDARD 283M

**JNHR RED STANDARD 68R**PDHR 3X STAND LASS 72B  
K 64H RIBSTONE LAD 157K**LCI 157K RIBSTONE GAL 129R**

LCI 175K JACKPOT MISS 158M

An exceptionally feminine heifer out of one of my favorite 157K daughters.

**Lot 101 - LCI 34U****101****LCI 4P RIBSTONE LASS 34U**C02911645 LCI 34U January 21 2008  
BW: 80 Adj WWT: 719 Adj YWT: 852

EPD's	
BW	3.9
WW	49.5 <small>Top 20%</small>
YW	81.8 <small>Top 20%</small>
Milk	16.7
TM	41.5
REA	0.20
Fat	-0.002
Marb.	-0.02

K 64H RIBSTONE LAD 157K

**LCI 157K RIBSTONE 4P**LCI SUPERIOR GIRL 121H  
LCI 6K KINGSTON 90M**LCI 9M MRS KING 191P**

LCI 172H DUNBAR GIRL ET 34K

A pigmented heifer out of the 4P mold. 191P has a bull calf in the sale Lot 27 this year.

**103****LCI 71S CLOONEY GAL 175U**C02923702 LCI 175U March 21 2008  
BW: 95 Adj WWT: 708 Adj YWT: 906

EPD's	
BW	7.6
WW	53.1 <small>Top 10%</small>
YW	98.6 <small>Top 2%</small>
Milk	22.5 <small>Top 15%</small>
TM	49.0 <small>Top 10%</small>
REA	0.09
Fat	0.020
Marb.	-0.08

LCI 6H WALDO 125P

**LCI 125P CLOONEY 71S**LCI 157K RIBSTONE GIRL 126N  
BP ROBIN HOOD 6N**LCI 6N ROBIN HOOD MISS 153R**

LCI 9K MS QUIGLEY 189M

A short marked heifer with red eyes. Take a look at all the 125P daughters that have good sale bulls this year. They will all be on display sale day.

**104****LCI 68R STANDARD GAL 106U**C02911646 LCI 106U February 01 2008  
BW: 102 Adj WWT: 718 Adj YWT: 886

EPD's	
BW	9.4
WW	61.7 <small>Top 10%</small>
YW	98.1 <small>Top 2%</small>
Milk	15.4
TM	46.3
REA	0.27
Fat	-0.028
Marb.	-0.03

JNHR RED STANDARD 283M

**JNHR RED STANDARD 68R**PDHR 3X STAND LASS 72B  
LCI 157K RIBSTONE 35N**LCI 35N RIBSTONE GAL 7R**

LCI T097 TAM O'LASS 72N

A feminine, short marked heifer and pigmented just like her good 35N dam.





**105**

**LCI 68R STANDARD GAL 90U**

C02911632 LCI 90U February 04 2008  
 BW: 104 Adj WWT: 711 Adj YWT: 840

EPD's	
BW	8.2
WW	54.5 <small>Top 5%</small>
YW	84.2 <small>Top 15%</small>
Milk	19.9 <small>Top 25%</small>
TM	47.2 <small>Top 10%</small>
REA	0.19
Fat	-0.014
Marb.	0.06 <small>Top 30%</small>

JNHR RED STANDARD 283M

**JNHR RED STANDARD 68R**  
 PDHR 3X STAND LASS 72B  
 K 64H RIBSTONE LAD 157K

**LCI 157K RIBSTONE LASS 75P**  
 LCI T097 TAM O' LASS 108M

A feminine 68R heifer out of a 157K daughter that is just the right type.



**106**

**LCI 52N RIBSTONE LASS 53U**

C02911504 LCI 53U Feb. 14 2008  
 BW: 85 Adj WWT: 859 Adj. YWT: 890

EPD's	
BW	4.1
WW	38.7
YW	68.1
Milk	18.4
TM	37.8
REA	0.10
Fat	-0.030
Marb.	0.03

K 64H RIBSTONE LAD 157K

**LCI 157K RIBSTONE 52N**  
 LCI 172H DESTINY 215K  
 STORMOUNT 24H

**STORMOUNT 17L**  
 JV NORMA 519

A roomy heifer with extra volume out of a consistent producing cow we bought from Doug and Marge Fraser, Dewinton, AB.

**107**

**LCI 68R STANDARD GAL 47U**

C02911539 LCI 47U January 31 2008  
 BW: 97 Adj WWT: 691 Adj YWT: 838

EPD's	
BW	7.2
WW	49.4
YW	74.2
Milk	10.4
TM	35.1
REA	0.18
Fat	0.001
Marb.	0.01

JNHR RED STANDARD 283M

**JNHR RED STANDARD 68R**  
 PDHR 3X STAND LASS 72B  
 BCD 721G KING 6K

**LCI 6K RAYNA 122M**  
 LCI 98A SOUTH ALTA LASS 181C

A short marked and feminine heifer. Her dam is out of Brad & Kathy Dallas's King bull.

**108**

**LCI 4P RIBSTONE LASS 24U**

C02911507 LCI 24U January 30 2008  
 BW: 90 Adj WWT: 700 Adj. YWT: 916

EPD's	
BW	7.3
WW	57.7 <small>Top 5%</small>
YW	84.8 <small>Top 15%</small>
Milk	13.1
TM	42.0
REA	0.31 <small>Top 25%</small>
Fat	-0.019
Marb.	-0.06

K 64H RIBSTONE LAD 157K

**LCI 157K RIBSTONE 4P**  
 LCI SUPERIOR GIRL 121H  
 96 ANDY 81F

**LCI 81F ANDY GIRL 41L**  
 LCI JUSTICE MISS 250D

Out of a feminine Andy daughter that is truly functional with sound feet and udder.

**109**

**LCI 68R STANDARD GAL 105U**

C02911656 LCI 105U February 02 2008  
 BW: 87 Adj WWT: 687 Adj YWT: 859

EPD's	
BW	4.9
WW	48.1
YW	77.3
Milk	18.8
TM	42.8
REA	0.11
Fat	0.012
Marb.	0.18 <small>Top 1%</small>

JNHR RED STANDARD 283M

**JNHR RED STANDARD 68R**  
 PDHR 3X STAND LASS 72B  
 K 64H RIBSTONE LAD 157K

**LCI 157K RIBSTONE GAL 110R**  
 LCI 82H KAHLUA GIRL 155M

Easy to look at with a super disposition! Dam is again a 157K daughter that assures milk.



**110**

**LCI 45S TIBBIE 165U**

LCI 165U 1435019 February 16 2008  
 BW: 78 Adj 205: 823 Adj. YWT: 1094

N BAR EMULATION EXT

**BENCHMARK EMULATION EXT**

MVF TIBBIE 80J  
 THREE TREE PRIME CUT 0145

**LCI 0145 LINDA 132S**

LCI NEW DESIGN MISS 143P

EPD's	
BW	0.7
WW	44
YW	77
Milk	20
TM	42
YG	33

Light birth, good performance, top milk and a big REA. A clean fronted attractive heifer coming naturally from a sweet Prime Cut cow. Exposed to LCI 109T from April 17 to June 1<sup>st</sup>. Guaranteed to be safe in calf.



**111**

**LCI 45S TIBBIE 136U**

LCI 136U 1434998 January 17 2008  
 BW: 73 Adj 205: 737 Adj. YWT: 992

N BAR EMULATION EXT

**BENCHMARK EMULATION EXT**

MVF TIBBIE 80J  
 THREE TREE PRIME CUT 0145

**LCI 0145 DESTINY 136S**

LCI NEW DESIGN MISS 143P

EPD's	
BW	0.6
WW	40
YW	74
Milk	15
TM	35
YG	34

Thick and easy fleshing in a moderate frame size. Out of a Prime Cut young cow that is complete with a good udder and nice disposition. Exposed to LCI 109T from April 17 to June 1<sup>st</sup>. Guaranteed to be safe in calf.



**112**

**LCI 45S TIBBIE 128U**

LCI 128U 1434995 January 11 2008  
 BW: 70 Adj 205: 748 Adj. YWT: 958

N BAR EMULATION EXT

**BENCHMARK EMULATION EXT**

MVF TIBBIE 80J  
 IRONWOOD NEW LEVEL

**LCI 9399 NEW LEVEL 113S**

LCI DESTINY 1M

EPD's	
BW	0.2
WW	40
YW	70
Milk	18
TM	38
YG	30

Extra light birth weight, above breed average for WW, YW, Milk and Marbling. A faultless New Level dam! Exposed to LCI 109T from April 17 to June 1<sup>st</sup>. Guaranteed to be safe in calf.



**113**

**LCI 45S TIBBIE 39U**

LCI 39U 1435021 February 22 2008  
 BW: 88 Adj 205: 897 Adj. YWT: 969

N BAR EMULATION EXT

**BENCHMARK EMULATION EXT**

MVF TIBBIE 80J  
 CUDLOBE YELLOWSTONE 1'03

**LCI MISTY ET 57R**

LCI HOPE 3L

EPD's	
BW	3.9
WW	48
YW	84
Milk	25
TM	49
YG	36

Long sided, neat fronted with adequate muscle. Excellent EPD profile! Exposed to LCI 109T from April 17 to June 1<sup>st</sup>. Guaranteed to be safe in calf.

114

**LCI 45S TIBBIE 147U**

LCI 147U 1434997 January 17 2008  
BW: 80 Adj 205: 785 Adj. YWT: 1025

N BAR EMULATION EXT

**BENCHMARK EMULATION EXT**

MVF TIBBIE 80J  
LCI TRANSFORMER 94P

**LCI 94P PRIDE 156S**

LCI FAITH 4L

EPD's	
BW	3.0
WW	37
YW	65
Milk	15
TM	34
YG	27

A proud attractive heifer out of a hard working Transformer 94P cow. Exposed to LCI 109T from April 17 to June 1<sup>st</sup>. Guaranteed to be safe in calf.



**Terms and Conditions**

**TERMS:** Cash or half cash – balance due June 1<sup>st</sup>, 2010, interest free.

If half cash terms are desired, we request that the buyer leave a post-dated cheque. US buyers please note – US funds will be excepted at par; exchange will be calculated per bank exchange rates as at sale day morning.

**\*NEW\* VOLUME DISCOUNT**

Purchase 5 to 9 bulls or heifers or a combination of both and take 5% off the total price.

OR

Purchase 10 or more animals and take 10% off.

**SALE REPRESENTATIVES:**

Bob Balog, Auctioneer.....403.382.5727  
Louis Balog.....403.331.0611  
Brad Balog.....403.642.7444  
Ben Brillhart, Hereford World...406.855.2021

**GUARANTEE:** All bred females have been pregnancy tested and guaranteed safe in calf. Bulls are guaranteed to be breeders. If failing to be satisfactory breeders, they will be replaced or a credit given on purchase of replacement. They must be returned to us for evaluation of the animal in good health and properly cared for. In any event, the sellers are responsible only to the extent of the purchase price of said animal. Each animal becomes the responsibility of the purchaser as soon as sold. Standard Canadian Hereford Association guarantee applies.

**DELIVERY:**

**Bulls:** If the buyer wishes, free **fall** delivery up to **300** miles to central points, and \$100 deducted off price or free **wintering** and the bulls picked up by **April 1<sup>st</sup>, 2010**. All bulls must be insured, available sale day from Heather Barr, CFI.

**Females:** Free **fall** delivery on females from purchases totaling **\$2500** or more in a **300** mile radius to central points. Animals must be fully insured!

**USA:** Animals going to the USA will be gotten ready with federal vet and brokerage papers and delivered to the US border. Again, animals need to be insured and we will co-operate with any other arrangements that need to be made on all animals.

**LIABILITY:** Mishaps at cattle sales are very rare and every precaution will be taken for the safety of visitors; however, the owners and management assume no liability should an accident occur.

**ERRORS:** If errors are noted in the catalogue, corrections announced from the stand take precedence over printed material.

**ACCOMMODATIONS:** Reservations can be made for you, just contact us. There is a paved, lighted airstrip 2.5 miles from the ranch. Contact us to pick you up at the airfield.

*Thank you for attending  
our 36<sup>th</sup> sale.  
We appreciate your  
business.*



**HEATHER BARR**

Suite 375, 13220 St. Albert Trail  
Edmonton, AB T5L 4W1  
Toll Free: 1-877-472-8678  
Fax: (780) 448-0281  
Web: www.cdnfarmins.com

Home: (403) 337-0052  
Fax: (403) 337-0052  
Cell: (780) 853-7067  
Email: hbarr@cdnfarmins.com

**Farm • Livestock • Commercial • Personal Lines**