



35th Annual Production Sale
Wednesday, November 12th, 2008
1:00 pm at the ranch





Brad, Nelson & Paula Doenz - Kristy & Ken Robinson



Tant Boothman



Helen Doenz

Welcome...

We wonder where the year has gone, but here we are. Once again it's a pleasure to welcome you to the ranch for our 35th sale and thank you to all who are using LCI genetics.

We are proud of our cowherd, the quality and consistency we feel runs deep in our herd. Therefore you will find quality from lot 1 right through to the final lot. This is the only sale LCI cattle are offered! We are consistently making strides to better our cattle. Firstly, we want them to be efficient, easy fleshing and rancher friendly. The British breeds Hereford and Angus are known for that and we need to make sure we retain it. We are consistently adding performance, making sure the maternal side is right and improving the carcass in the herd. As you study the catalogue you will see we are doing just that. The EPDS on the herd sires and sale offering are at the top of the breed. Carcass quality is something we have worked hard on. High marbling and good REA do not always go hand in hand, but our herd sires 157K, 107R and 31R have top epds for both. We are really excited also with the Champion 68R calves.

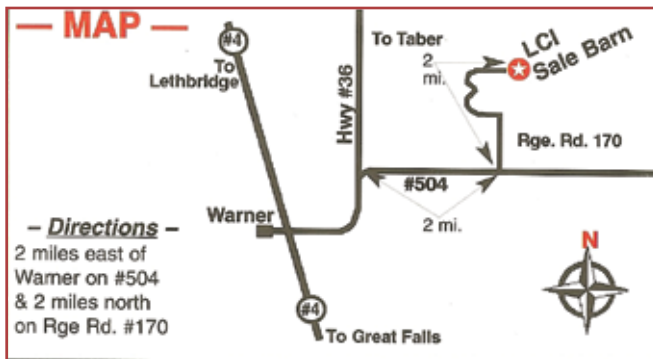
We are here to be of service, consider using our free wintering program on bulls or free fall delivery, pay half cash sale day and half June 1st, 2009. Feel free to contact anyone of us listed in the phone directory to help you make the right selection for your herd.

The Doenz Family

Nelson & Paula Doenz
(403)642-2380
Brad Doenz
(403)642-3894

Cell Phone Directory:
Nelson.....(403)642-7696
Paula(403)642-7695
Brad(403)642-7694

Fax: (403)642-2471 E-mail: doenzranches@gmail.com
PO Box 362, Warner, Alberta Canada T0K 2L0



LCI / Doenz Ranches 35th Annual Production Sale

November 12, 2008 1:00 p.m. at the Ranch

Sale Day Phones - (403)642-7696 or (403)642-7694

View Color Catalogue On-line: www.doenzranches.net



Herdsires



K 64H RIBSTONE LAD 157K

C02764939 CJK 157K May 13 2000
 BW: n/a Adj. WWT: 738 Adj. YWT: 1268

- STANDARD RIBSTONE 16E
- STANDARD 16E RIBSTONE 64H**
- STANDARD LASS 23E
- SNS SUPER PACE ET 61Z
- K 61Z SUPER LADY 41G**
- K 58X MASTER LADY 89Z

One of the most respected and sought after sires in recent times, proven and predictable. Sires bulls with added muscle, easy fleshing, and large scrotum. His females are awesome and they are the back bone of our herd today. With 377 progeny and 52 daughters in production his epds are very accurate and they are out of this world. He is in the top 20% of the breed for WW, top 5% for YW, top 1% for milk, top 1% for TM, top 1% for scrotal circumference, top 1% for MPI, top 10% for REA, top 1% for IMF. His contribution to the breed will be unmeasurable.



LCI 157K RIBSTONE 107R

C02862176 LCI 107R January 16 2005
 BW: 94 Adj. WWT: 830 Adj. YWT: 1417

- STANDARD 16E RIBSTONE 64H
- K 64H RIBSTONE LAD 157K**
- K 61Z SUPER LADY 41G
- LCI KAHLUA 82H
- LCI 82H KAHLUA ANDIE 174M**
- LCI 81F ANDIE 214K

An exciting young herd sire! Used here exclusively on heifers and proved to be an exceptional calver. His calves are everything we had hoped for. What outstanding epds...in the top 5% for WW, top 1% for YW, top 1% for Milk, top 1% for TM and for his carcass he is in the top 1% for REA, top 1% for IMF. You will be hearing a lot more from 107R in the future.



JNHR RED STANDARD 68R

C02872588 PMT 68R April 02 2005
 BW: 94 Adj. WWT: n/a Adj. YWT: n/a

- JNHR STANDARD LAD 329J
- JNHR RED STANDARD 283M**
- JNHR FIRST LADY 187E
- MELSTAR STANDARD VOLT 3X
- PDHR 3X STAND LASS 72B**
- PDHR 25S DOMINO LASS 71Y

2007 Calgary Champion Bull. A bull with wonderful breed character, his muscle pattern, deep rib and over all structural correctness puts him in a league of his own. His first calf crop are outstanding and he consistently puts his stamp on each calf. Owned with the Floyd Anderson family.



LCI 157K RIBSTONE 83S

C02882261 LCI 83S January 16 2006
 BW: 98 Adj. WWT: 782 Adj. YWT: 1318

- STANDARD 16E RIBSTONE 64H
- K 64H RIBSTONE LAD 157K**
- K 61Z SUPER LADY 41G
- LCI KAHLUA 82H
- LCI 82H MISS KAHLUA 152M**
- LCI 172H DUNBAR GIRL 16K

83S was our high seller in 2006 and is owned with the Ramsey's and Tyler's of Cutknife, SK and Ironbark Herefords of Australia. He sires calves with eye appeal, performance and yet will breed in extra milk.



EPD's	
BW	3.9
WW	48.5
YW	95.3
Milk	34.8
TM	59.1
COW	49.8
MPI	176.6
REA	0.49
Fat	-0.033
Marb.	0.72



EPD's	
BW	8.1
WW	48.0
YW	82.5
Milk	13.1
TM	37.1
COW	42.8
MPI	n/a
REA	0.13
Fat	-0.013
Marb.	-0.03



EPD's	
BW	3.5
WW	54.4
YW	105.2
Milk	28.6
TM	55.8
COW	61.4
MPI	177.8
REA	0.65
Fat	-0.045
Marb.	0.37



EPD's	
BW	4.2
WW	43.4
YW	79.8
Milk	29.7
TM	51.4
COW	50.6
MPI	164.7
REA	0.26
Fat	-0.001
Marb.	0.21



LBH 20J STANMORE 31R

C02864574 LBH 31R February 16 2005
 BW: 85 Adj WWT: 746 Adj YWT: 1223

AGA 4016D STANMORE 121G

AGA 121G STANMORE 20J

AGA 40E MISS STANMORE 80G
 SJSI HI 20 STAND LAD 10S

LBH 10S STAN LASS 34N

AGA 26H MISS STD BRITISH 120K

A bull that is extremely deep ribbed and easy fleshing. An athletic range bull that can cover a lot of cows. A performance bull with epds right in the top of the breed. Good REA and IMF in the top 5% of the breed. Owned with Lilybrook Herefords.



EPD's	
BW	5.6
WW	65.7
YW	99.5
Milk	27.5
TM	60.4
COW	64.2
MPI	193.1
REA	0.31
Fat	-0.022
Marb.	0.31



LCI 157K RIBSTONE 4P

C02843225 LCI 4P January 23 2004
 BW: 101 Adj WWT: 913 Adj YWT: 1425

STANDARD 16E RIBSTONE 64H

K 64H RIBSTONE LAD 157K

K 61Z SUPER LADY 41G
 JNHR DIAMOND 99D

LCI SUPERIOR GIRL 121H

LCI BIG REDS LASS 57A

Powerful performance, yet highly maternal. His mother is second to none in our herd. His first calf heifers have calved and they are really something. Outstanding performance, milk EPD's and strong carcass EPD's. Owned with Courtney Herefords, Montana and Keith & Gillian Miles, Australia.

EPD's	
BW	6.2
WW	68.3
YW	116.5
Milk	22.3
TM	56.5
COW	71.4
MPI	187.2
REA	0.35
Fat	-0.027
Marb.	0.15



LCI 6H WALDO 125P

C02843292 LCI 125P January 16 2004
 BW: 105 Adj WWT: 733 Adj YWT: 1237

SSD MONTANA 9640 1ET

LCI BD OSWALD 6H

LCI MAVERICK 32F
 LCI KAHLUA 82H

LCI 82H MISS KAHLUA 146K

LCI STD BRIT LASS 21E

A bull that is short marked, pigmented and easy fleshing. A real pasture bull that will service a lot of cows. His first heifer crop have calved with many having sale bulls. They are special! Owned with Wendell Reimer, Manitoba.



EPD's	
BW	5.7
WW	45.6
YW	86.7
Milk	18.3
TM	41.1
COW	57.8
MPI	149.4
REA	0.13
Fat	0.054
Marb.	0.12



LCI 157K RIBSTONE 52N

C02824464 LCI 52N February 17 2003
 BW: 97 Adj WWT: 774 Adj YWT: 1206

STANDARD 16E RIBSTONE 64H

K 64H RIBSTONE LAD 157K

K 61Z SUPER LADY 41G
 LCI DUNBAR 172H

LCI 172H DESTINY 215K

LCI DOWNUNDER 87H

Extra long bodied, a heavy pigmented 157K son. His dam was flushed for Haven Herefords, England. 52N sires calves with extra length and style.

EPD's	
BW	6.1
WW	49.7
YW	98.6
Milk	26.6
TM	51.5
COW	53.9
MPI	165.4
REA	0.22
Fat	-0.68
Marb.	0.13

2008 Hereford Bull Calves

All bulls will be wintered free of charge, but they must be INSURED!
 Buyer can pick up their bull at their own convenience by April 1st,
 2009. If the buyer should want their bull delivered this fall we will
 deduct \$100 from the purchase price.

Fall EPD Herefords Breed Averages

BW	WW	YW	Milk	TM
3.6	40.1	66.3	15.8	35.8



1

LCI WB RED STANDARD 838U

C02911732 LCI 838U January 26 2008
 BW: 106 Adj WWT: 796

JNHR RED STANDARD 283M
JNHR RED STANDARD 68R

PDHR 3X STAND LASS 72B
 K 64H RIBSTONE LAD 157K

JTB RIBSTONE LASS 902P

LCI 9K QUIGLEY MISS ET 222M

EPD's	
BW	6.8
WW	49.6
YW	87.4
Milk	20.9
TM	45.7
REA	0.19
Fat	-0.008
Marb.	0.12

A heavy powerhouse son of 68R with a gentle disposition. He comes with big time thickness, muscle, and style. He recorded a 796 lb WW with an index of 109. He ranks in the top 15% of the breed for WW, top 10% for YW and top 15% for milk. He has unique quality of having superior REA and good IMF. The females in his pedigree are flawless. 902P is a picture perfect 157K daughter, perfect udder, feet and is a high capacity female. 222M is an ET daughter out of Quigley and our top flush cow 92G. She has a herd sire working at Bonaventure Herefords, Lanigan, SK



2

LCI 68R RED STANDARD 109U

C02911590 LCI 109U January 19 2008
 BW: 80 Adj WWT: 741

JNHR RED STANDARD 283M
JNHR RED STANDARD 68R

PDHR 3X STAND LASS 72B
 K 64H RIBSTONE LAD 157K

LCI KD CRYSTAL 7N

LCI KD SAPHIRE 159H

EPD's	
BW	6.6
WW	48.9
YW	88.6
Milk	19.8
TM	44.3
REA	0.22
Fat	-0.015
Marb.	0.15

A long high capacity performance bull, with the making of a top herd sire. 109U is fully pigmented, short marked and very fluid in movement. 109U is in the top of the breed in all his performance traits. His REA is above breed average, yet for IMF, he is in the top 15% for the breed. There is something to be said for a cow who can produce calves year after year that rise to the top. 7N's last year's bull calf is out of Panda that we selected to use in our own herd. She has an average WI of 105.5, YW of 107. What a special 157K daughter that is a freckle faced, pigmented cow with good milk flow from a well designed udder. 109U's grandmother 159H and great grandmother 12B, both are special cows in our herd going back to Kristy's successful 4-H career and raising many herd sires and females!



3

LCI 107R RIBSTONE 154U

C02911775 LCI 154U January 22 2008
 BW: 102 Adj WWT: 790

K 64H RIBSTONE LAD 157K

LCI 157K RIBSTONE 107R

LCI 82H KAHLUA ANDIE 174M
 LCI 6H WALDO 125P

LCI 125P NELLIE 105S

LCI T097 TAM O' LASS 43M



A standout calf from birth! A deep chested heavy quartered bull that has a 790 lb WW and what super epds! WW is in the top 5%, YW top 1%, milk top 10%, TM top 5% of the breed. And get this, both his REA and marbling are in the top 10% of the breed. His dam, 105S is a first calf heifer pigmented and freckles on her face and udder. She is going to make a mark in our herd.

EPD's	
BW	7.6
WW	56.2
YW	106.4
Milk	23.9
TM	52.0
REA	0.41
Fat	-0.017
Marb.	0.19



4

LCI BD 31R STANMORE 327U

C02911768 LCIB 327U January 30 2008
 BW: 86 Adj WWT: 805

AGA 121G STANMORE 20J

LBH 20J STANMORE 31R

LBH 10S STAN LASS 34N
 LCI 157K RIBSTONE 79P

LCI BD 79P FANCY 409S

BP 91F RUBY 72L



327U is uniquely deep, massive and powerful! Both 31R and 79P have the capability to add extra depth of body and easy fleshing ability to their progeny. A 94 lb birth weight, yet a 805 WW and index of 111. His epds across the board are in the top of the breed. His marbling is in the top 1% of the breed. His first calf dam is "well" you just need to look for yourself. We would use a herd sire out of her.

EPD's	
BW	4.6
WW	54.2
YW	93.6
Milk	23.2
TM	50.3
REA	0.18
Fat	0.001
Marb.	0.38



5

LCI BD 31R PLAYBOY 325U

C02911769 LCIB 325U February 08
 BW: 92 Adj WWT: 796

AGA 121G STANMORE 20J

LBH 20J STANMORE 31R

LBH 10S STAN LASS 34N
 K 64H RIBSTONE LAD 157K

LCI BD 157K RIBSTONE GAL 411S

LCI 81F ANDY GIRL 211L



Playboy is a big stout fella that will deliver pounds to your herd. He has a 796 lb WW. Again a bull calf with excellent epds right across the board with super REA and marbling. His hard working moderate framed 157K first calf dam is the right kind.

EPD's	
BW	5.1
WW	50.7
YW	78.8
Milk	24.7
TM	50.1
REA	0.33
Fat	-0.037
Marb.	0.24



6

LCI RC 107R RIBSTONE 125U

C02911705 LCI 125U January 16 2008
 BW: 86 Adj WWT: 771

K 64H RIBSTONE LAD 157K

LCI 157K RIBSTONE 107R

LCI 82H KAHLUA ANDIE 174M
 LCI 157K RIBSTONE 46P

LCI RC 46P KIMBERLY 150S

LCI 6H OSWALD MISS 166P



Two shots of 157K in 125U. A bull with a 94 lb BW and a 771 WW out of a first calf heifer. Do you need to improve the carcass in your herd, 125U is in the top 10% of the breed for REA and top 1% for marbling. What unique epds – lighter birth weight than the breed average, yet WW in the top 20%, YW top 20%, YW top 5%, Milk top 5%, and TM top 5%.

EPD's	
BW	3.1
WW	48.9
YW	91.4
Milk	25.7
TM	50.1
REA	0.44
Fat	-0.031
Marb.	0.33



7

LCI BD 68R RED STANDARD 320U

C02911766 LCIB 320U February 07 2008
 BW: 106 Adj WWT: 838

JNHR RED STANDARD 283M

JNHR RED STANDARD 68R

PDHR 3X STAND LASS 72B
 K 64H RIBSTONE LAD 157K

LCI BD RIBSTONE GAL 310R

LCI 6H OSWALD LASSY 61L

320U is stylish and attractive, yet wide backed and has a big hip. An 838 lb WW and index of 115 in our herd. His exceptional 157K dam has an average WI of 113 on her calves. This fellow would be a positive addition in any herd.

8

LCI 68R RED STANDARD 96U

C02911654 LCI 96U February 01 2008
 BW: 102 Adj WWT: 720

JNHR RED STANDARD 283M

JNHR RED STANDARD 68R

PDHR 3X STAND LASS 72B
 K 64H RIBSTONE LAD 157K

LCI 157K RIBSTONE GAL 96R

LCI ROYAL WENDY 11D

An attractive, thick made bull that is easy to look at. He has an abundance of thick yellow hair, a big hip, great feet and leg structure. His moderate framed easy fleshing dam has a super udder that is a characteristic of 157K. His granddam, a Royal Red daughter 11D produced here to a ripe old age and was a model cow.

EPD's	
BW	7.8
WW	51.0
YW	87.9
Milk	22.1
TM	47.6
REA	0.09
Fat	-0.020
Marb.	0.21

EPD's	
BW	7.0
WW	46.1
YW	83.5
Milk	20.0
TM	43.0
REA	0.17
Fat	-0.006
Marb.	0.18



Paul Flamand



LCI is a proud supporter of the Canadian Junior Hereford Association



9

LCI 68R RED STANDARD 56U

C02911537 LCI 56U January 21 2008
 BW: 102 Adj WWT: 712

JNHR RED STANDARD 283M
JNHR RED STANDARD 68R
 PDHR 3X STAND LASS 72B
 LCI BD OSWALD 6H
LCI 6H OSWALD 112M
 LCI RED VOLT LAD 214H

A classy individual with a powerful rump and quarter. Like his dad he has a foot in each corner and a long athletic stride. 112M is easy fleshing and has a well designed udder.

EPD's	
BW	6.0
WW	41.0
YW	73.0
Milk	13.0
TM	33.5
REA	0.03
Fat	-0.011
Marb.	0.04



10

LCI 83S RIBSTONE 85U

C02911535 LCI 85U February 08 2008
 BW: 114 Adj WWT: 744

K 64H RIBSTONE LAD 157K
LCI 157K RIBSTONE 83S
 LCI 82H MISS KAHLUA 152M
 SMITHSTON TAM O'SHANTER ET2

LCI T097 TAM O' LASS 108M
 LCI SUPERIOR GIRL 187H

A bull with an attractive appearance, naturally thick, full of muscle and pounds. Being out of 83S he will be easy fleshing and have a big scrotum. 108M is a larger framed female with clean lines and more than adequate milk.

EPD's	
BW	7.7
WW	49.9
YW	86.9
Milk	23.2
TM	48.2
REA	0.12
Fat	-0.009
Marb.	0.02

12

LCI 68R RED STANDARD 25U

C02911514 LCI 25U January 24 2008
 BW: 109 Adj WWT: 770

JNHR RED STANDARD 283M
JNHR RED STANDARD 68R
 PDHR 3X STAND LASS 72B
 LCI SUPERIOR 31H

LCI KD JASMINE 195L
 LCI KD CANDY 107E

A thick wide based bull with length and volume. His moderate framed dam has 6 progeny with an average weaning index of

EPD's	
BW	7.8
WW	46.3
YW	73.4
Milk	16.0
TM	39.1
REA	0.14
Fat	-0.013
Marb.	-0.21

13

LCI 68R RED STANDARD 70U

C02911490 LCI 70U January 24 2008
 BW: 113 Adj WWT: 721 Adj YWT

JNHR RED STANDARD 283M
JNHR RED STANDARD 68R
 PDHR 3X STAND LASS 72B
 LCI JUSTICE 250F

LCI VIOLA 230H
 LCI MISTRESS POWER 220B

A volume calf that is yellow haired and pigmented. The 9th calf for 230H that has past the test of time. Still good footed and uddered, also has never missed bringing a calf home.

EPD's	
BW	8.1
WW	45.1
YW	79.2
Milk	12.7
TM	35.3
REA	0.12
Fat	-0.022
Marb.	-0.20



16U (Lot 11) and dam

11

LCI 68R RED STANDARD 16U

C02911564 LCI 16U January 31 2008
 BW: 101 Adj WWT: 786

JNHR RED STANDARD 283M
JNHR RED STANDARD 68R
 PDHR 3X STAND LASS 72B
 LCI 82H QUIGLEY 9K

LCI 9K MS QUIGLEY 189M
 LCI SOUTH ALTA LASS 290F

He is all bull! An impressive muscle pattern, loose hided, and naturally thick. His Quigley dam has an average index of 108 on her bull calves.

EPD's	
BW	6.7
WW	42.9
YW	77.3
Milk	17.8
TM	39.3
REA	-0.02
Fat	0.013
Marb.	-0.11

14**LCI 68R RED STANDARD 17U**C02911491 LCI 17U January 26 2008
BW: 115 Adj WWT: 771

JNHR RED STANDARD 283M

JNHR RED STANDARD 68RPDHR 3X STAND LASS 72B
PDHR 923Y STAND LAD 66F**LCI BRITTANY 27J**

LCI SUPERIOR LASS 83G

All bull!!! Stout, yet has clean lines and very fluid in his movement. His dam is a grand old matron with 8 calves to her record, yet still solid as a dollar.

EPD's	
BW	9.1
WW	51.9
YW	91.8
Milk	13.1
TM	39.1
REA	0.07
Fat	0.002
Marb.	-0.02

15**LCI 68R RED STANDARD 118U**C02911719 LCI 118U February 12 2008
BW: 105 Adj WWT: 762

JNHR RED STANDARD 283M

JNHR RED STANDARD 68RPDHR 3X STAND LASS 72B
MW PRAIRIE 68H**LCI 68H PRAIRIE LASS 115N**

LCI TAMMY 224H

If you sell by the pound, this fellow will pay dividends. You will appreciate his sogginess, depth of rib and his all over meatiness. His dam consistently raises calves with extra performance. Her WI is 110 in our herd.

EPD's	
BW	7.4
WW	48.8
YW	83.6
Milk	15.0
TM	39.4
REA	0.06
Fat	0.000
Marb.	-0.05

16**LCI 52N RIBSTONE 40U**C02911615 LCI 40U March 02 2008
BW: 112 Adj WWT: 790

K 64H RIBSTONE LAD 157K

LCI 157K RIBSTONE 52NLCI 172H DESTINY 215K
LCI 82H SPUR 98K**LCI 98K KAHULA 173N**

LCI 77H REFORM LASS 153L

Eye appeal, top WW, extra milk. Here's a bull that will catch your eye as well as his feminine brood cow dam. She has a WI of 107.5 on 4 calves.

EPD's	
BW	7.7
WW	52.6
YW	98.8
Milk	20.1
TM	46.4
REA	0.14
Fat	-0.048
Marb.	-0.05

17**LCI 125P OSWALD 86U**C02911651 LCI 86U February 24 2008
BW: 112 Adj WWT: 783

LCI BD OSWALD 6H

LCI 6H WALDO 125PLCI 82H MISS KAHLUA 146K
K 64H RIBSTONE LAD 157K**LCI 157K RIBSTONE GAL 82R**

LCI KD JASMINE 195L

This fellow is just the end of February calf, but right in there with the big boys. His dam is right out of the 157K mold. Again top performance with good milk and excellent carcass numbers.

EPD's	
BW	7.9
WW	51.6
YW	91.8
Milk	23.0
TM	48.8
REA	0.28
Fat	0.009
Marb.	0.08



60U - Lot 18 and dam (right)



98U - Lot 19

18**LCI 68R RED STANDARD 60U**C02911774 LCI 60U January 26 2008
BW: 95 Adj WWT: 633

JNHR RED STANDARD 283M

JNHR RED STANDARD 68RPDHR 3X STAND LASS 72B
BP ROBIN HOOD 6N**LCI 6N ROBIN HOOD MISS 71R**

LCI 81F ANDY GIRL 41L

60U is light colored, short marked and pigmented. A bull with eye appeal. His dam is a big barreled female with an up tight udder.

EPD's	
BW	5.4
WW	40.5
YW	64.3
Milk	13.4
TM	33.6
REA	-0.01
Fat	-0.006
Marb.	-0.20

19**LCI 68R RED STANDARD 98U**C02911488 LCI 98U February 08 2008
BW: 107 Adj WWT: 758

JNHR RED STANDARD 283M

JNHR RED STANDARD 68RPDHR 3X STAND LASS 72B
JNHR DIAMOND 99D**LCI SUPERIOR GIRL 121H**

LCI BIG REDS LASS 5

Lots of red and complete make up. Out of our 121H cow, the dam of the 4P herd sire. On 9 calves she has a 106 WI and 107 YI. She is the type you can build your herd around.

EPD's	
BW	7.3
WW	48.6
YW	78.8
Milk	12.0
TM	36.3
REA	0.01
Fat	-0.014
Marb.	-0.12

20**LCI 68R RED STANDARD 74U**C02911612 LCI 74U January 28 2008
BW: 117 Adj WWT: 767

JNHR RED STANDARD 283M

JNHR RED STANDARD 68RPDHR 3X STAND LASS 72B
LCI ET HIGH VOLTAGE 80S**LCI 80S VOLTAGE LASS 106N**

LCI MADISON DEBI 183G

A 68R calf right out of a High Voltage daughter. He has extra length and depth of body.

EPD's	
BW	9.8
WW	52.6
YW	90.0
Milk	15.9
TM	42.2
REA	0.20
Fat	-0.024
Marb.	0.00

21**LCI 107R RIBSTONE 159U**C02911693 LCI 159U January 23 2008
BW: 86 Adj WWT: 708

K 64H RIBSTONE LAD 157K

LCI 157K RIBSTONE 107RLCI 82H KAHLUA ANDIE 174M
LCI 6H WALDO 125P**LCI 125P OSWALD LASSY 101S**

LCI 157K RIBSTONE GIRL 49N

No holes in this bull... a 86 lb birth weight, yet big weaning & yearling epds. His milk is in the top 5% of the breed, REA +37 puts him in the top 15%, yet his marbling is +35 which is in the top 2% of the breed. What a wonderful first calf heifer that is feminine and truly functional. Two shots of 157K and Kahlua spells milk.

EPD's	
BW	3.3
WW	45.5
YW	88.7
Milk	24.8
TM	47.5
REA	0.37
Fat	0.006
Marb.	0.35

22**LCI 125P OSWALD 65U**C02911592 LCI 65U February 24 2008
BW: 103 Adj WWT: 738

LCI BD OSWALD 6H

LCI 6H WALDO 125PLCI 82H MISS KAHLUA 146K
SMITHSTON TAM O'SHANTER ET2**LCI T097 TAM O'LASS 18N**

LCI 98A LASS 173D

A youngster with plenty of growth still in him. 125P is a bull that can cover a lot of cows and travel in a big pasture, 65U will be the same.

EPD's	
BW	7.0
WW	44.7
YW	79.1
Milk	18.4
TM	40.8
REA	0.16
Fat	0.008
Marb.	0.02

23**LCI 68R RED STANDARD 12U**C02911498 LCI 12U January 27 2008
BW: 97 Adj WWT: 768

JNHR RED STANDARD 283M

JNHR RED STANDARD 68RPDHR 3X STAND LASS 72B
96 ANDY 81F**LCI 81F ANDIE 81K**

LCI SOUTH ALTA LASS 104G

There is volume in 12U. Being out of 68R and the old 81K cow assure functionality and longevity. We retained 81K's 31R bull calf last year to use on our heifers. She has never had a calf yet with a 100 lb birth weight. At her age she still has perfect feet and udder.

EPD's	
BW	5.8
WW	39.8
YW	64.5
Milk	13.2
TM	33.1
REA	0.10
Fat	-0.034
Marb.	-0.13

24**LCI 68R RED STANDARD 113U**C02911502 LCI 113U February 04 2008
BW: 98 Adj WWT: 742

JNHR RED STANDARD 283M

JNHR RED STANDARD 68RPDHR 3X STAND LASS 72B
LCI DUNBAR 172H**LCI 172H DUNBAR GIRL 138K**

LCI JUSTICE MISS 250D

A 68R son with a flashy style. A solid fault free bull with a long stride. 138K has passed the test of time and she still has excellent feet and udder.

EPD's	
BW	5.1
WW	35.8
YW	59.9
Milk	14.2
TM	32.1
REA	-0.03
Fat	-0.003
Marb.	-0.06

25**LCI 52N RIBSTONE 89U**C02911614 LCI 89U February 04 2008
BW: 103 Adj WWT: 691

K 64H RIBSTONE LAD 157K

LCI 157K RIBSTONE 52NLCI 172H DESTINY 215K
LCI KAHLUA 82H**LCI 82H KAHLUA LADY 170N**

LCI 81F ANDY GIRL 39L

A mossy yellow haired bull that is deep bodied, yet clean fronted. Being out of a Kahlua daughter assures milk in his daughters.

EPD's	
BW	5.3
WW	42.3
YW	76.2
Milk	22.1
TM	43.3
REA	0.15
Fat	-0.034
Marb.	0.04

26**LCI KK 107R MENPHISTO 555U**C02911697 LCI 555U February 21 2008
BW: 88 Adj WWT: 728

K 64H RIBSTONE LAD 157K

LCI 157K RIBSTONE 107RLCI 82H KAHLUA ANDIE 174M
LCI 6H WALDO 125P**LCI 125P OSWALD LASSY 110S**

LCI KD CRYSTAL 7N

A 107R son with a 88 lb BW and 728 lb WW. What a tremendous set of epds and look at the carcass - both REA and IMF are in the top 5% of the breed. You will appreciate this first calf heifer, 110S when you see her and her mother, 7N has a real special 68R calf in the sale Lot 2. All this and you can use Menphisto on heifers.

EPD's	
BW	3.7
WW	48.8
YW	93.9
Milk	25.4
TM	49.8
REA	0.47
Fat	-0.016
Marb.	0.28

27**LCI 31R STANMORE 163U**C02911675 LCI 163U February 20 2008
BW: 98 Adj WWT: 783

AGA 121G STANMORE 20J

LBH 20J STANMORE 31RLBH 10S STAN LASS 34N
K 64H RIBSTONE LAD 157K**LCI 157K RIBSTONE GAL 40S**

LCI KD JASMINE 195L

A short marked bull with tons of hair and a 783 lb WW. Out of a first calf 157K daughter that is exceptional, feminine, with a perfect udder and has rich milk. His epds for performance, milk, and carcass are at the top of the breed.

EPD's	
BW	7.0
WW	58.0
YW	93.3
Milk	27.2
TM	56.2
REA	0.28
Fat	-0.026
Marb.	0.22

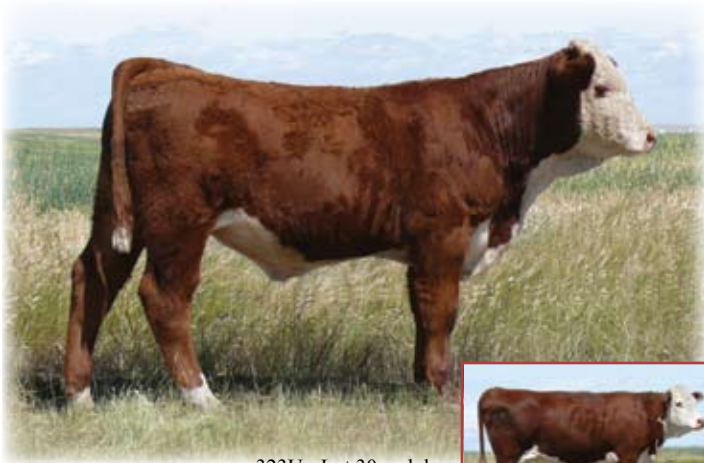
28**LCI 107R RIBSTONE 148U**C02911670 LCI 148U January 17 2008
BW: 97 Adj WWT: 730

K 64H RIBSTONE LAD 157K

LCI 157K RIBSTONE 107RLCI 82H KAHLUA ANDIE 174M
FA ROCK SOLID BRITISHER 67M**LCI 67M ROCKETTE 11S**

LCI 82H KAHLUA LADY 93L

This bull is light colored with a reasonable birth weight and a 780 lb WW. He is also out of a first calf heifer



323U - Lot 30 and dam

**30****LCI BD 4P RIBSTONE 323U**C02911759 LCIB 323U February 08 2008
BW: 102 Adj WWT: 723

K 64H RIBSTONE LAD 157K

LCI 157K RIBSTONE 4PLCI SUPERIOR GIRL 121H
LCI 6K KINGSTON 90M**LCI BD MRS KING 17P**

LCI 82H MISS KAHLUA 127K

Short marked and pigmented. Top epds right across the board and above average REA and IMF. 17P is a larger framed 90M female that is short marked, pigmented and has an excellent udder.

33**LCI 4P RIBSTONE 114U**C02911594 LCI 114U February 09 2008
BW: 114 Adj WWT: 776

K 64H RIBSTONE LAD 157K

LCI 157K RIBSTONE 4PLCI SUPERIOR GIRL 121H
SMITHSTON TAM O'SHANTER ET2**LCI T097 TAM O'LESS 43N**

LCI SOUTH ALTA LASS 290F

Again a bull with super performance and high milk, all in the top of the breed. His carcass numbers are also above average. 4P daughters are rated high in our herd.

EPD's	
BW	6.4
WW	53.2
YW	94.8
Milk	25.3
TM	51.9
REA	0.33
Fat	-0.022
Marb.	0.08

29**LCI 4P RIBSTONE 9U**C02911609 LCI 9U February 14 2008
BW: 115 Adj WWT: 778

K 64H RIBSTONE LAD 157K

LCI 157K RIBSTONE 4PLCI SUPERIOR GIRL 121H
SMITHSTON TAM O'SHANTER ET2**LCI T097 TAM O'LESS 62N**

LCI RED DOLLY 171B

Tons of performance in this fellow, with excellent milk and good carcass. 62N has an average WI of 108 on her progeny. Need to add pounds to your calf crop, then 9U will do the job.

EPD's	
BW	8.9
WW	64.9
YW	108.8
Milk	19.3
TM	51.8
REA	0.21
Fat	-0.018
Marb.	0.08

31**LCI 68R RED STANDARD 205U**C02911595 LCI 205U February 01 2008
BW: 100 Adj WWT: 705

JNHR RED STANDARD 283M

JNHR RED STANDARD 68RPDHR 3X STAND LASS 72B
SMITHSTON TAM O'SHANTER ET2**LCI T097 TAM O'LESS 45N**

ILK SUPER GIRL 59J

Extra long, short marked and pigmented. Big time epds for performance, yet good milk. You will like his dam 45N, she is the cowmans type.

EPD's	
BW	7.8
WW	53.1
YW	90.3
Milk	14.6
TM	41.1
REA	0.21
Fat	-0.024
Marb.	0.00

32**LCI 52N RIBSTONE 2U**C02911618 LCI 2U January 26 2008
BW: 105 Adj WWT: 732

K 64H RIBSTONE LAD 157K

LCI 157K RIBSTONE 52NLCI 172H DESTINY 215K
LCI KAHLUA 82H**LCI 82H KAHLUA LADY 182N**

LCI 36G MARY CHERRY 119L

Cherry red, pigmented and correct phenotype. 182N has a WI on 4 calves of 108. A calf that is in the top 10% of the breed for WW, YW and milk.

EPD's	
BW	7.2
WW	52.0
YW	93.8
Milk	23.8
TM	49.8
REA	0.13
Fat	-0.023
Marb.	0.04

34**LCI 4P RIBSTONE 49U**C02912582 LCI 49U March 03 2008
BW: 109 Adj WWT: 772

K 64H RIBSTONE LAD 157K

LCI 157K RIBSTONE 4PLCI SUPERIOR GIRL 121H
LCI BD OSWALD 6H**LCI 6H OSWALD MISS 149P**

LCI 82H KAHLUA LADY 114L

A March bull with big time performance and milk. 149P has an average WI on her calves of 107. If you are looking to put some power, performance and punch into your herd while enjoying his maternal traits, then 49U is the ticket!

EPD's	
BW	8.7
WW	60.9
YW	101.3
Milk	22.5
TM	53.0
REA	0.24
Fat	-0.032
Marb.	0.03

EPD's	
BW	7.0
WW	59.6
YW	100.7
Milk	22.3
TM	52.2
REA	0.14
Fat	-0.010
Marb.	0.07

35**LCI 52N RIBSTONE 77U**C02911640
BW: 93LCI 77U
Adj WWT: 762

February 11 2008

K 64H RIBSTONE LAD 157K

LCI 157K RIBSTONE 52NLCI 172H DESTINY 215K
LCI 6K KINGSTON 90M**LCI 90M REFORM LASS 140P**

LCI 82H KAHLUA LADY 89L

Has extra pigment like his dam, reasonable birth weight and a big weaning weight. 21.2 milk is in the top 15% of the breed.

EPD's	
BW	5.0
WW	45.4
YW	86.8
Milk	21.2
TM	43.9
REA	0.18
Fat	-0.026
Marb.	0.07

36**LCI 4P RIBSTONE 102U**C02911622
BW: 96LCI 102U
Adj WWT: 741

February 11 2008

K 64H RIBSTONE LAD 157K

LCI 157K RIBSTONE 4PLCI SUPERIOR GIRL 121H
LCI 77H REFORM 148L**LCI 148L REFORM LASS 28P**

LCI 81F ANDIE 214K

I appreciate this fellows ease of movement, great feet and legs. Like his sire that has the ability to turn grass into pounds.

EPD's	
BW	5.8
WW	55.3
YW	92.5
Milk	18.6
TM	46.3
REA	0.23
Fat	-0.039
Marb.	0.00

37**LCI 52N RIBSTONE 7U**C02911513
BW: 99LCI 7U
Adj WWT: 710

January 24 2008

K 64H RIBSTONE LAD 157K

LCI 157K RIBSTONE 52NLCI 172H DESTINY 215K
96 ANDY 81F**LCI 81F ANDY GIRL 158L**

LCI SUPER LASS 186A

A light colored attractive individual out of an Andy daughter that has produced 6 consecutive calves, of which 3 are daughters that are retained in our herd.

EPD's	
BW	5.7
WW	41.8
YW	74.9
Milk	16.5
TM	37.4
REA	0.10
Fat	-0.051
Marb.	-0.05

38**LCI 68R RED STANDARD 13U**C02911627
BW: 81LCI 13U
Adj WWT: 691

January 20 2008

JNHR RED STANDARD 283M

JNHR RED STANDARD 68RPDHR 3X STAND LASS 72B
K 64H RIBSTONE LAD 157K**LCI 157K RIBSTONE LASS 47P**

LCI 6H OSWALD MISSY 91M

A soggy, deep chested calf. This 68R x 157K cross is working really well.

EPD's	
BW	6.9
WW	48.9
YW	86.5
Milk	20.1
TM	44.6
REA	0.15
Fat	-0.015
Marb.	0.19

39**LCI 68R RED STANDARD 32U**C02911508
BW: 98LCI 32U
Adj WWT: 665

January 26 2008

JNHR RED STANDARD 283M

JNHR RED STANDARD 68RPDHR 3X STAND LASS 72B
96 ANDY 81F**LCI 81F ANDY GIRL 88L**

LCI 86U LOUISE LASS 198X

A bull with lots of capacity, light colored and pigmented. 88L is a consistent producer with 6 calves in 6 years.

EPD's	
BW	6.1
WW	38.3
YW	56.5
Milk	10.0
TM	29.2
REA	0.19
Fat	-0.038
Marb.	-0.09

40**LCI 68R RED STANDARD 36U**C02911516
BW: 102LCI 36U
Adj WWT: 712

February 18 2008

JNHR RED STANDARD 283M

JNHR RED STANDARD 68RPDHR 3X STAND LASS 72B
LCI BD OSWALD 6H**LCI 6H OSWALD LASSY 209L**

LCI YOUNG LADY 205D

Lots of timber, extra hair and eye appeal. He's his father's son.

EPD's	
BW	6.1
WW	38.4
YW	64.4
Milk	13.5
TM	32.7
REA	0.02
Fat	-0.010
Marb.	0.02

41**LCI 68R RED STANDARD 103U**C02911660
BW: 104LCI 103U
Adj WWT: 727

February 25 2008

JNHR RED STANDARD 283M

JNHR RED STANDARD 68RPDHR 3X STAND LASS 72B
BP ROBIN HOOD 6N**LCI 6N ROBIN HOOD MISS 144R**

LCI 68H WYAT LASS 70L

A bull with extra color, extra bone and a thick hair coat like his sire. An excellent range bull selection!

EPD's	
BW	7.9
WW	51.2
YW	85.7
Milk	13.1
TM	38.7
REA	0.08
Fat	-0.015
Marb.	-0.16



Hereford Yearling Bulls

No bulls held back for spring bull sales. All our best are being offered. All bulls are wintered free of charge, but must be **INSURED**. Buyer can pick up their bull at their convenience by April 1st, 2009. If the buyer should want the bull delivered this fall they may deduct \$100 off the purchase price.



42

LCI 79P RIBSTONE 63T

C02897174 LCI 63T February 15 2007
 BW: 106 Adj WWT: 774 Adj YWT: 1294

K 64H RIBSTONE LAD 157K

LCI 157K RIBSTONE 79P

LCI 82H KAHLUA GIRL 155M
 SMITHSTON TAM O'SHANTER ET2

LCI TAM O'LASS ET 57M

LCI 82H MISS KAHLUA 55K

All bull! Coon-eyed, short marked and free moving. A bull with performance and muscle, out of 79P, the National Champion bull in 2005.

EPD's	
BW	6.8
WW	51.0
YW	98.2
Milk	24.6
TM	50.1
REA	0.25
Fat	-0.007
Marb.	0.14



43

LCI 46P RIBSTONE 29T

C02897184 LCI 29T February 05 2007
 BW: 103 Adj WWT: 728 Adj YWT: 1263

K 64H RIBSTONE LAD 157K

LCI 157K RIBSTONE 46P

LCI 9K MARONE ET 223M
 LCI 172H DUNBAR 104K

LCI 104K MISS DUNBAR 128M

LCI 82H MISS KAHLUA 146K

An eye appealing curly haired bull. Use 29T to add performance to your calves, but expect tremendous females also. Excellent EPDS that are well above breed average!

EPD's	
BW	7.5
WW	54.1
YW	97.7
Milk	22.6
TM	49.7
REA	0.26
Fat	-0.019
Marb.	0.06



44

LCI BD 122P PANDA 312T

C02897142 LCIB 312T February 12 2007
 BW: 100 Adj WWT: 760 Adj YWT: 1258

BP 146D SANDMAN 108J

BP PANDA 122P

BP MISS COMMANDER 48F

LCI KAHLUA 82H

LCI 82H MISS KAHLUA 102K

LCI SUPERIOR GIRL 121H

Super profile, extra performance, a top end bull. His Kahlua dam raised a herd sire for Bill Stonehouse, Owen Sound, ON. His grand dam 121H is the mother of our 4P bull.

312T - Lot 44

EPD's	
BW	6.9
WW	61.7
YW	94.2
Milk	14.5
TM	45.3
REA	0.29
Fat	0.004
Marb.	-0.31



45

LCI BD 79P RIBSTONE 305T

C02897152 LCIB 305T February 10 2007
 BW: 108 Adj WWT: 672 Adj YWT: 1274

K 64H RIBSTONE LAD 157K

LCI 157K RIBSTONE 79P

LCI 82H KAHLUA GIRL 155M

LCI SUPERIOR 31H

LCI 31H DIAMOND GIRL 67L

LCI CLASSIC GIRL 238A

Top 10% of the breed for yearling weight and marbling. 79P sires extra muscle and capacity.

305T - Lot 45

EPD's	
BW	5.7
WW	42.6
YW	86.2
Milk	21.1
TM	42.4
REA	0.00
Fat	0.006
Marb.	0.20



46

LCI 122P PANDA 17T

C02897204 LCI 17T February 11 2007
 BW: 100 Adj WWT: 773 Adj YWT: 1198

BP 146D SANDMAN 108J

BP PANDA 122P

BP MISS COMMANDER 48F
 SMITHSTON TAM O'SHANTER ET2

LCI T097 TAM O' LASS 43N

LCI SOUTH ALTA LASS 290F

Extra long bodied and a big rib eye area. Excellent performance record also. A top range bull.

EPD's	
BW	7.4
WW	55.7
YW	80.8
Milk	17.2
TM	45.0
REA	0.29
Fat	-0.022
Marb.	-0.28

47

LCI 122P PANDA 69T

C02897239 LCI 69T February 15 2007
 BW: 107 Adj WWT: 693 Adj YWT: 1257

BP 146D SANDMAN 108J

BP PANDA 122P

BP MISS COMMANDER 48F
 K 64H RIBSTONE LAD 157K

LCI 157K RIBSTONE LASS 82P

LCI 6H OSWALD 112M

Huge performance, good milk and a rib eye area in the top 10% of the breed. His dam is a great 157K daughter.

EPD's	
BW	7.9
WW	59.0
YW	100.0
Milk	17.2
TM	46.7
REA	0.40
Fat	-0.024
Marb.	-0.04

48

LCI 52N RIBSTONE 74T

C02897195 LCI 74T March 07 2007
 BW: 105 Adj WWT: 754 Adj YWT: 1256

K 64H RIBSTONE LAD 157K

LCI 157K RIBSTONE 52N

LCI 172H DESTINY 215K
 LCI KAHLUA 82H

LCI 82H KAHLUA ANDIE 174M

LCI 81F ANDIE 214K

Lots of curly hair, big milk numbers and high performance. 74T's mother is the dam of our herd sire 107R.

EPD's	
BW	6.6
WW	50.6
YW	91.4
Milk	24.5
TM	49.8
REA	0.29
Fat	-0.058
Marb.	-0.03

49

LCI 4P RIBSTONE 176T

C02897258 LCI 176T March 26 2007
 BW: 98 Adj WWT: 706 Adj YWT: 1179

K 64H RIBSTONE LAD 157K

LCI 157K RIBSTONE 4P

LCI SUPERIOR GIRL 121H
 LCI BD OSWALD 6H

LCI 6H OSWALD MISS 174P

LCI TEMPOTWO 11J

Top carcass bull with extra marbling, yet good rib eye area. A 4P son with extra WW and YW

EPD's	
BW	6.0
WW	56.5
YW	99.8
Milk	14.7
TM	43.0
REA	0.15
Fat	-0.021
Marb.	0.13

50

LCI BD WALDO 320T

C02897229 LCIB 320T March 18 2007
 BW: 110 Adj WWT: 704 Adj YWT: 1196

LCI BD OSWALD 6H

LCI 6H WALDO 125P

LCI 82H MISS KAHLUA 146K
 LCI 6K KINGSTON 90M

LCI BD MRS KING 17P

LCI 82H MISS KAHLUA 127K

320T's dam, 17P has a good bull calf again this year LOT 30.

EPD's	
BW	8.2
WW	47.1
YW	86.7
Milk	17.5
TM	41.0
REA	0.07
Fat	0.028
Marb.	0.05

51

LCI 122P PANDA 11T

C02897143 LCI 11T February 20 2007
 BW: 113 Adj WWT: 703 Adj YWT: 1106

BP 146D SANDMAN 108J

BP PANDA 122P

BP MISS COMMANDER 48F
 LCI DUNBAR 172H

LCI 172H DUNBAR GIRL 138K

LCI JUSTICE MISS 250D

This fellow is out of the Panda bull. 11T will add pounds. 138K is a productive cow here, producing consistently top end calves. She has a bull calf in the sale, LOT 24.

EPD's	
BW	7.3
WW	49.5
YW	70.9
Milk	13.6
TM	38.4
REA	0.15
Fat	-0.009
Marb.	-0.33

52**LCI 122P PANDA 6T**C02897134 LCI 6T February 14 2007
BW: 104 Adj WWT: 711 Adj YWT: 1139

BP 146D SANDMAN 108J

BP PANDA 122PBP MISS COMMANDER 48F
LCI JUSTICE 250F**LCI MISS JUSTICE 221J**

LCI YOUNG LADY 205D

A range bull that is short marked, athletic, and a big rib eye area.

EPD's	
BW	6.9
WW	46.8
YW	67.0
Milk	13.4
TM	36.8
REA	0.24
Fat	-0.020
Marb.	-0.37

53**LCI 125P WALDO 97T**C02897245 LCI 97T February 17 2007
BW: 105 Adj WWT: 820 Adj YWT: 1397

LCI BD OSWALD 6H

LCI 6H WALDO 125PLCI 82H MISS KAHLUA 146K
K 64H RIBSTONE LAD 157K**LCI 157K RIBSTONE LASS 122P**

LCI 82H MISS KAHLUA 121K

He is in the top 10% of the breed for WW, YW, and milk. Excellent carcass numbers also. It's not often you will find a big rib eye area and a marbling score like 97T.

EPD's	
BW	7.0
WW	57.9
YW	106.9
Milk	25.0
TM	54.0
REA	0.34
Fat	0.017
Marb.	0.15

54**LCI 31R STANMORE 40T**C02897207 LCI 40T January 24 2007
BW: 105 Adj WWT: 770 Adj YWT: 1220

AGA 121G STANMORE 20J

LBH 20J STANMORE 31RLBH 10S STAN LASS 34N
SMITHSTON TAM O'SHANTER ET2**LCI T097 TAM O'LASS 44N**

LCI BREANNA 228H

If you want easy fleshing active range bulls, then 31R sons are just that. A big maternal bull with good growth performance also.

EPD's	
BW	7.6
WW	57.2
YW	85.7
Milk	22.6
TM	51.2
REA	0.16
Fat	-0.034
Marb.	0.03

55**LCI 125P WALDO 181T**C02897176 LCI 181T April 02 2007
BW: 105 Adj WWT: 841 Adj YWT: 1295

LCI BD OSWALD 6H

LCI 6H WALDO 125PLCI 82H MISS KAHLUA 146K
LCI DUNBAR 172H**LCI 172H DUNBAR GIRL 89M**

LCI MISS JUSTICE 222J

A young bull with a 841 lb WW and almost 1300 YW. A performance bull, yet a +19 milk.

EPD's	
BW	6.9
WW	50.7
YW	89.5
Milk	19.0
TM	44.3
REA	0.07
Fat	0.012
Marb.	-0.07

56**LCI 122P PANDA 14T**C02897208 LCI 14T February 19 2007
BW: 97 Adj WWT: 726 Adj YWT: 966

BP 146D SANDMAN 108J

BP PANDA 122PBP MISS COMMANDER 48F
K 64H RIBSTONE LAD 157K**LCI 157K RIBSTONE GIRL 68N**

LCI VOLTAGE LASS 67G

A Panda son out of a 157K daughter spells maternal to me

EPD's	
BW	5.7
WW	51.4
YW	68.1
Milk	13.2
TM	38.9
REA	0.25
Fat	-0.029
Marb.	-0.14

57**LCI 67M ROCK SOLID 122T**C02897253 LCI 122T February 18 2007
BW: 106 Adj WWT: 717 Adj YWT: 1170

LPG INDEPENDENCE 67H

FA ROCK SOLID BRITISHER 67MFA BRITISHER LADY ET 88H
LCI 6K KINGSTON 90M**LCI 90M REFORM LASS 140P**

LCI 82H KAHLUA LADY 89L

A coon-eyed short marked bull with a big hip on him.

EPD's	
BW	7.8
WW	48.7
YW	76.6
Milk	17.4
TM	41.8
REA	-0.03
Fat	-0.004
Marb.	-0.17

58**LCI BD 4P RIBSTONE 321T**C02897220 LCIB 321T March 23 2007
BW: 98 Adj WWT: 699 Adj YWT: 1163

K 64H RIBSTONE LAD 157K

LCI 157K RIBSTONE 4PLCI SUPERIOR GIRL 121H
LCI KAHLUA 82H**LCI BD 82H NAVAJO 164N**

LCI 6H OSWALD LASSY 163L

4P females are second to none and being out of a Kahlua cow confirms that this fellow will produce excellent females.

EPD's	
BW	5.3
WW	51.8
YW	92.1
Milk	21.2
TM	47.1
REA	0.10
Fat	-0.009
Marb.	0.06

59**LCI 125P WALDO 2T**C02897241 LCI 2T February 12 2007
BW: 95 Adj WWT: 669 Adj YWT: 1110

LCI BD OSWALD 6H

LCI 6H WALDO 125PLCI 82H MISS KAHLUA 146K
LCI 6K KINGSTON 90M**LCI 90M MRS KING 111P**

STORMOUNT 17L

A 125P son that is free walking. A bull that will cover a lot of cows.

EPD's	
BW	4.8
WW	34.5
YW	61.8
Milk	15.8
TM	33.0
REA	0.00
Fat	0.025
Marb.	0.11

Angus Bull Calves

FALL ANGUS EPDS BULL AVERAGES

BW	WW	YW	Milk	TM
+3.1	+38	+68	+15	+34



This bull could very well be the thickest and meatiness in the group. He has a gentle disposition with an 83 lb birth weight and a 834 lb weaning weight. You will especially like his big foot and how he strides out like a true herd sire.



60

LCI 5R FREEDOM 1U

LCI 1U 1435008 January 28 2008
 BW: 83lbs. Adj 205: 834lbs.

TC FREEDOM 104

WESTERN FREEDOM 505

WESTERN MISSIE 5N
 COLDSTREAM DOMINATOR 7G

LCI ANCHOR ROSE ET 75R

TWIN HILLS BARBARA ROSE 4'93

EPD's	
BW	4.5
WW	49
YW	84
Milk	17
TM	42
YG	36



He is as correct and free moving as they come, yet has a big hip and depth of rib. Last year's full brother we have retained to use in our own herd and what a breeder he was, really covering the pasture and getting the job done.



61

LCI 5R FREEDOM 19U

LCI 19U 1435006 January 26 2008
 BW: 88lbs. Adj 205: 818lbs.

TC FREEDOM 104

WESTERN FREEDOM 505

WESTERN MISSIE 5N
 B/R NEW FRONTIER 095

LCI NEW FRONTIER LADY 67P

LCI FAITH 4L

EPD's	
BW	4.3
WW	53.5
YW	94.5
Milk	19.5
TM	46
YG	41





45U - Lot 62



62

LCI IN FOCUS 45U

LCI 45U 1435013 February 01 2008
 BW: 90lbs. Adj 205: 796lbs.

S A F FOCUS OF E R

MYTTY IN FOCUS

MYTTY COUNTESS 906
 WINDOVER COMMITMENT 2K

WILLDON VALENTINE MERCEDES 70M

WILLDON VALENTINE ROSHUMBA 3G

A stout bull that is deep chested and very well muscled. Being out of In Focus, the heavily used AI sire that is known for calving ease, yet good performance and milk. 45U's dam consistently brings home a top calf. Last years bull went to Larry Mahachuk and the year before to Mark & Jan Daley.

EPD's	
BW	1.1
WW	40
YW	76
Milk	22
TM	41
YG	36

63

LCI 5R FREEDOM 8U

LCI 8U 1434996 January 16 2008
 BW: 98lbs. Adj 205: 757lbs.

TC FREEDOM 104

WESTERN FREEDOM 50S

WESTERN MISSIE 5N
 COLDSTREAM DOMINATOR 7G

LCI FAITH 4L

GH ANCHOR ROSE 3G

EPD's	
BW	4.5
WW	47
YW	81
Milk	14
TM	37
YG	36

A rock solid son of Freedom with added muscle and substance.



41U - Lot 64



64

LCI 5R FREEDOM 41U

LCI 41U 1435011 January 31 2008
 BW: 80lbs. Adj 205: 780lbs.

TC FREEDOM 104

WESTERN FREEDOM 50S

WESTERN MISSIE 5N
 YOUNG DALE MONARCH 12E

LCI MONARCH GAL 106P

SANDY BAR LINDA 6G

EPD's	
BW	4.1
WW	51
YW	85
Milk	12
TM	37
YG	35

A full brother last year sold to Rob and Audrey Taylor. Want to use on heifers and still get good weaning weights? Well you can!



132U - Lot 65



65

LCI 45S EMULATION 132U

LCI 132U 1435015 February 05 2008
 BW: 80lbs. Adj 205: 837lbs.

N BAR EMULATION EXT

BENCHMARK EMULATION EXT

MVF TIBBIE 80J
 THREE TREES PRIME CUT 0145

LCI 0145 LINDA 92S

LCI 6G LINDA 1N

A deep chested, thick made bull that is easy to look at. Tremendous spread from an 80 lb birth weight to an 837 lb weaning weight. His dam is a model range cow that is deep bodied, moderate framed, and easy fleshing. A flush daughter out of Prime Cut and our Linda 1N cow.

EPD's	
BW	n/a
WW	n/a
YW	n/a
Milk	n/a
TM	n/a
YG	n/a

66

LCI 45S EMULATION 151U

LCI 151U 1435012 February 01 2008
 BW: 78lbs. Adj 205: 813lbs.

N BAR EMULATION EXT

BENCHMARK EMULATION EXT

MVF TIBBIE 80J
 THREE TREES PRIME CUT 0145

LCI 0145 LINDA 30S

LCI 6G LINDA 1N

EPD's	
BW	n/a
WW	n/a
YW	n/a
Milk	n/a
TM	n/a
YG	n/a

A full blood brother to 132U and they are two peas in a pod. Again out of a top young female with easy fleshing that Prime Cut and 1N put in their offspring. Do not be afraid to use these bulls on heifers or the cows.

67**LCI 5R FREEDOM 54U**LCI 54U 1435016 February 06 2008
BW: 90lbs. Adj 205: 822lbs.

TC FREEDOM 104

WESTERN FREEDOM 505WESTERN MISSIE 5N
B/R NEW FRONTIER 095**LCI NEW FRONTIER LADY 163P**

GH MONARCH ROSE 18K

A Freedom son with tremendous shape, muscle and hind quarter. His dam, a New Frontier 095 daughter is a front pasture female with substance and clean lines.

EPD's	
BW	3.7
WW	54
YW	94
Milk	17
TM	44
YG	40

68**LCI 5R FREEDOM 37U**LCI 37U 1435003 January 24 2008
BW: 92lbs. Adj 205: 746lbs.

TC FREEDOM 104

WESTERN FREEDOM 505WESTERN MISSIE 5N
B/R NEW FRONTIER 095**LCI NEW FRONTIER LADY 45P**

LCI DESTINY 1M

A bull that profiles very well, yet from behind you can see his thickness, quarter and wide back.

EPD's	
BW	3.8
WW	55
YW	96
Milk	15
TM	43
YG	41

69**LCI 45S EMULATION 191U**LCI 191U 1435028 March 14 2008
BW: 88lbs. Adj 205: 861lbs

N BAR EMULATION EXT

BENCHMARK EMULATION EXTMVF TIBBIE 80J
B/R NEW FRONTIER 095**LCI NEW FRONTIER LADY 153P**

GH MONARCH ROSE 18K

A light birth weight and a big weaning weight. Just a middle of March calf that has a lot of growth yet in him. These New Frontier daughters are producers. He can be used on heifers or cows.

EPD's	
BW	2.0
WW	41
YW	74
Milk	15
TM	35
YG	34

70**LCI 45S EMULATION 149U**LCI 149U 1435001 January 21 2008
BW: 70lbs. Adj 205: 798lbs.

N BAR EMULATION EXT

BENCHMARK EMULATION EXTMVF TIBBIE 80J
PEAK DOT HOBSON 57N**BARDOLIA OF PEAK DOT 456S**

BARDOLIA OF PEAK DOT 255H

This fellow has a low birth weight of 70 lb yet comes in with almost an 800 lb weaning weight. The dam is a moderate framed Peak Dot first calf heifer that really milks well.

EPD's	
BW	1.4
WW	41
YW	74
Milk	16
TM	36
YG	34

71**LCI BLACK DESIGN 50U**LCI 50U 1435020 February 16 2008
BW: 87lbs. Adj 205: 828lbs

B/R NEW DESIGN 036

EBON HILL BLACK DESIGN 41'03ISLA BANK PRIME BEAUTY 7E
STEVENSON AMBUSH 9731**BENCHMARK LAVENDER LADY 4103**

BENCHMARK LAVENDER LADY 133

LCI 50U – Again a bull with a reasonable birth weight and big weaning weight. Sired by the Ebon Hill bull that goes back to the most influential carcass bull of the breed B/R New Design 036.

EPD's	
BW	4.5
WW	51
YW	85
Milk	18
TM	43
YG	34

72**LCI DATELINE 69U**LCI 69U 1435018 February 13 2008
BW: 78lbs. Adj 205: 830lbs.

VERMILION DATELINE 7078

EBON HILL 7080 DATELINE 68'06EBON HILL LAVENDER LADY 453'97
EBON HILL BLACK DESIGN 41'03**EBON HILL BLACKCAP 290'05**

EBON HILL BLACKCAP 290'95

69U's sire was bred by Ebon Hill of Medicine Hat. VRD is one of the high performance bulls of the breed. The dam is a moderate framed heavy milking cow.

EPD's	
BW	n/a
WW	n/a
YW	n/a
Milk	n/a
TM	n/a
YG	n/a

73**LCIB 68S DATELINE 311U**LCIB 311U 1435036 February 09 2008
BW: 91lbs. Adj 205: 813lbs.

VERMILION DATELINE 7078

EBON HILL 7080 DATELINE 68'06EBON HILL LAVENDER LADY 453'97
EBON HILL BLACK DESIGN 41'03**EBON HILL BLACKCAP 390'05**

EBON HILL BLACKCAP 290'97

Again a Dateline calf with added performance. 69U and 311U dams are half sisters being out of Ebon Hill Black Design.

EPD's	
BW	n/a
WW	n/a
YW	n/a
Milk	n/a
TM	n/a
YG	n/a

74**LCIB 153P AMBUSH 324U**LCIB 324U 1435035 February 06 2008
BW: 88lbs. Adj 205: 808lbs.

ROCKN D AMBUSH 1531

EBON HILL 1531 AMBUSH 153'04EBON HILL CJ LAVENDER 353L
KAUTZ RIGHT TIME 102**EBON HILL CJ BLACKCAP 36'06**

CCL BLACKCAP SC 5N

A pedigree with milk and top females. His sire is a calving ease bull and this calf looks to be the same.

EPD's	
BW	2.5
WW	40
YW	70
Milk	11
TM	31
YG	29



Angus Yearling Bulls

75

LCI 505 FREEDOM 167T

LCI 167T 1394265 March 20 2007
 BW: 85lbs. Adj 205: 695lbs. Adj 365 day: 1128lbs.

TC FREEDOM 104

WESTERN FREEDOM 505

WESTERN MISSIE 5N
 TWIN HILLS HIGH TOP SOURCE 7E

LCI ROSIE 86R

GH MONARCH ROSE 18K

A coming 2 year old that was too young to sell as a calf. This Freedom son will cover a big pasture next summer. A free moving athletic individual.

76

LCI 505 FREEDOM 173T

LCI 173T 1394266 March 27 2007
 BW: 90lbs. Adj 205: 888lbs. Adj 365 day: 1342lbs.

TC FREEDOM 104

WESTERN FREEDOM 505

WESTERN MISSIE 5N
 CUDLOBE YELLOWSTONE 1'03

LCI JASMINE ET 53R

CI FAITH 4L

Once again a bull that was too young to sell as a calf. His dam is an ET out of Cudlobe's Yellowstone 1'03. There is milk and performance bred in this bull.

EPD's	
BW	n/a
WW	n/a
YW	n/a
Milk	n/a
TM	n/a
YG	n/a

EPD's	
BW	n/a
WW	n/a
YW	n/a
Milk	n/a
TM	n/a
YG	n/a

Angus Herd Sire



WESTERN FREEDOM 505

MWU 5R 1291914 January 11 2005
 BW: 77lbs. Adj 205: 783lbs. Adj 365 day: 1409lbs.

CONNEALY FOREFRONT

TC FREEDOM 104

T C RUBY 9095
 WESTERN WIDESPREAD 1L

WESTERN MISSIE 5N

WESTERN 9440 SC MISSIE 900J

EPD's	
BW	4.3
WW	68
YW	115
Milk	23
TM	57
SC	0.87
YG	48

Freedom was purchased as the feature bull at Wes Merrill's "Western Angus Sale". 505 has grown into a massive volume bull with muscling, easy fleshing and great disposition. Being out of Wes's premier "Widespread" cow insures the maternal side of 505. His calves are light at birth yet have explosive growth. Owned with Western Angus, Hillspring, AB; Jeannott Bros., Langbank, SK.



Service Sire for Heifers

LCI 31R STANMORE 81T

C002897139 LCI 81T February 11, 2007
 BW:82 Adj. WWT: 736 Adj. YWT: 1380

AGA 121G STANMORE 20J

LBH 20J STANMORE 31R

LBH 10S STAN LASS 34N3.1
 96 ANDY 81F

LCI 81F ANDIE 81K

LCI SOUTH ALTA LASS 104G



EPD's	
BW	3.1
WW	49.2
YW	78.3
Milk	20.4
TM	45.0
COW	33.9
MPI	163.7
REA	-0.034
Fat	0.25
Marb.	0.08



All the bred heifers have been exposed to LCI 81T from April 14, 2008 to June 10, 2008 and guaranteed to be safe in calf.

Bred Heifers



77

LCI 79P RIBSTONE LASS 22T

C02897131 LCI 22T February 06 2007
 BW: 90 Adj WWT: 697 Adj YWT: 902

K 64H RIBSTONE LAD 157K

LCI 157K RIBSTONE 79P

LCI 82H KAHLUA GIRL 155M
 LCI ALBERTA STAR 25G

LCI STAR BRIGHT 1J

LCI VOLTAGE LASS 81G

A tremendously thick easy fleshing daughter of the National Champion 79P. A definite front pasture heifer!
 Observed bred April 30/08



78

LCI 4P RIBSTONE LASS 133T

C02897302 LCI 133T February 12 2007
 BW: 97 Adj WWT: 703 Adj YWT: 1041

K 64H RIBSTONE LAD 157K

LCI 157K RIBSTONE 4P

LCI SUPERIOR GIRL 121H
 LCI 6K KINGSTON 90M

LCI 90M KINGSTON LADY 118R

LCI BD POPPY 112L

133T is in the top 1% of the breed for WW and YW, yet is in the top 20% for milk. She also boosts top carcass numbers. You can't build a better performance pedigree. 4P females are tops in our herd.

Observed bred on April 18/08

EPD's	
BW	3.8
WW	42.8
YW	78.5
Milk	18.1
TM	39.5
COW	60.1
MPI	145.6
REA	0.17
Fat	-0.022
Marb.	0.26

EPD's	
BW	9.5
WW	66.2
YW	118.5
Milk	20.6
TM	53.7
COW	91.3
MPI	173.7
REA	0.18
Fat	-0.012
Marb.	0.12



79

LCI 46P RIBSTONE LASS 60T

C02897170 LCI 60T January 30 2007
 BW: 75 Adj WWT: 625 Adj YWT: 825

K 64H RIBSTONE LAD 157K

LCI 157K RIBSTONE 46P

LCI 9K MARONE ET 223M
 LCI BD OSWALD 6H

LCI 6H OSWALD LASSY 209L

LCI YOUNG LADY 205D

A short marked feminine heifer with a +21 for milk and marbling numbers are in the top 5% of the breed.

Observed bred April 25/08



80

LCI 122P PANDA 65T

C02897121 LCI 65T February 13 2007
 BW: 92 Adj WWT: 801 Adj YWT: 980

BP 146D SANDMAN 108J

BP PANDA 122P

BP MISS COMMANDER 48F
 LCI YOUNG RANGER 91B

LCI 91B DOMINO LASS 206E

LCI ROYAL QUEEN 138C

65T has big red eyes and is short marked. 206E produced here until last year, now that is longevity. 138C was a super Royal Red daughter. 65T is bred to be maternal.

Observed bred April 22/08

EPD's	
BW	1.9
WW	33.6
YW	53.7
Milk	21.0
TM	37.8
COW	30.5
MPI	138.9
REA	0.08
Fat	-0.014
Marb.	0.30

EPD's	
BW	7.0
WW	58.9
YW	87.1
Milk	15.1
TM	44.6
COW	90.3
MPI	154.3
REA	0.20
Fat	0.025
Marb.	-0.21



5T - Lot 81

82

LCI BD 122P PANDA GAL 309T

C02897137 LCIB 309T February 02 2007
 BW: 102 Adj WWT: 655 Adj YWT: 883

BP 146D SANDMAN 108J

BP PANDA 122P

BP MISS COMMANDER 48F
 96 ANDY 81F

LCI 81F ANDIE 38K

LCI DIAMOND GIRL 182G

A Panda daughter with substance. 38K is one of our older females that consistently brings home a good calf. Longevity is bred into 309T.

Observed bred on April 17/08

EPD's	
BW	7.3
WW	55.4
YW	78.3
Milk	11.5
TM	39.2
COW	82.2
MPI	143.5
REA	0.39
Fat	-0.047
Marb.	-0.48

81

LCI 122P PANDA 5T

C02897135 LCI 5T February 11 2007
 BW: 94 Adj WWT: 655 Adj YWT: 947

BP 146D SANDMAN 108J

BP PANDA 122P

BP MISS COMMANDER 48F
 LCI DUNBAR 172H

LCI 172H DUNBAR GIRL ET 19K

LCI ALETA 171H

Bred royally with the Calgary Reserve Champion "Panda" and 19K our ET cow that has done so much in our herd.

Observed bred on April 16/08

EPD's	
BW	6.3
WW	53.9
YW	83.4
Milk	14.7
TM	41.7
COW	68.9
MPI	150.9
REA	0.43
Fat	-0.018
Marb.	-0.56

83

LCI 79P RIBSTONE LASS 50T

C02897165 LCI 50T January 26 2007
 BW: 88 Adj WWT: 652 Adj YWT: 863

K 64H RIBSTONE LAD 157K

LCI 157K RIBSTONE 79P

LCI 82H KAHLUA GIRL 155M
 JES SUPER SAM 703

LCI 703 JACKPOT LADY 147L

LCI SUPERIOR GIRL 123H

A +20 for a milk number and super carcass numbers, top 5% of the breed for marbling and top 3% for REA.

Exposed to LCI 81T from April 14, 2008 to June 10, 2008 and guaranteed to be safe in calf.

EPD's	
BW	3.0
WW	34.3
YW	65.2
Milk	20.1
TM	37.3
COW	25.8
MPI	141.4
REA	0.27
Fat	-0.024
Marb.	0.25



313T - Lot 85

84

LCI 122P PANDA 73T

C02897182 LCI 73T January 19 2007
 BW: 90 Adj WWT: 715 Adj YWT: 980

BP 146D SANDMAN 108J

BP PANDA 122P

BP MISS COMMANDER 48F
 LCI BD OSWALD 6H

LCI 6H OSWALD 112M

LCI RED VOLT LAD 214H

A long bodied heifer that is well pigmented. 112M has a good 68R bull calf in the sale this year LOT 9. 73T is worth looking up on sale day!

Observed bred on April 18/08

EPD's	
BW	5.5
WW	54.6
YW	86.8
Milk	12.4
TM	39.7
COW	67.6
MPI	148.7
REA	0.25
Fat	-0.023
Marb.	-0.29

85

LCI BD MISS WALDO 313T

C02897248 LCIB 313T January 23 2007
 BW: 105 Adj WWT: 746 Adj YWT: 985

LCI BD OSWALD 6H

LCI 6H WALDO 125P

LCI 82H MISS KAHLUA 146K
 LCI 77H REFORM 148L

LCI BD REFORM LASS 130P

BP 91F RUBY 72L

313T is clean fronted and all brood cow! 125P daughters have super udders.

Observed bred on April 29/08

EPD's	
BW	8.7
WW	55.0
YW	98.5
Milk	15.1
TM	42.6
COW	86.4
MPI	150.0
REA	0.07
Fat	0.000
Marb.	0.10

86

LCI 125P MISS WALDO 20T

C02897214 LCI 20T February 09 2007
 BW: 105 Adj WWT: 712 Adj YWT: 980

LCI BD OSWALD 6H

LCI 6H WALDO 125P

LCI 82H MISS KAHLUA 146K
 SMITHSTON TAM O'SHANTER ET2

LCI T097 TAM O'LASS 118N

BP MISS MARK DONALD 237A

A big performance heifer. 118N consistently raises calves that come in at the top end of our herd.

Observed bred on April 17/08

EPD's	
BW	8.5
WW	50.7
YW	92.2
Milk	18.1
TM	43.5
COW	70.4
MPI	155.0
REA	0.20
Fat	0.009
Marb.	0.07

Terms and Conditions

Terms: Cash or half cash – balance due June 1st, 2009, interest free.

If half cash terms are desired, we request that the buyer leave a post-dated cheque. US buyers please note – US funds will be excepted at par; exchange will be calculated per bank exchange rates as at sale day morning.

Sale Representatives:

Auctioneer: Bob Balog.....(403)382-5727

CHD: Kurt Gilmore..... (403)540-1771

Louie Balog.....(403)331-0611

GUARANTEE: All bred females have been pregnancy tested and guaranteed safe in calf. Bulls are guaranteed to be breeders. If failing to be satisfactory breeders, they will be replaced or a credit given on purchase of replacement. They must be returned to us for evaluation of the animal in good health and properly cared for. In any event, the sellers are responsible only to the extent of the purchase price of said animal. Each animal becomes the responsibility of the purchaser as soon as sold. Standard Canadian Hereford Association guarantee applies.

*Thank you for attending
our 35th sale.*

*We appreciate your
business.*

Delivery: Free delivery up to **300** miles to central points on all fall deliveries and animals must be fully insured. We will cooperate with any other arrangements that need to be made.

Bulls: If the buyer wishes, we will winter, free of charge, the bulls they purchase and the buyers can please pick up their bulls by **April 1st, 2009**. Bulls being left for the winter must be insured which will be provided on sale day by Heather Barr of Canadian Farm Insurance. If buyer should want the bull delivered in the fall we will deduct \$100 from the purchase price.

Liability: Mishaps at cattle sales are very rare and every precaution will be taken for the safety of visitors; however, the owners and management assume no liability should an accident occur.

Errors: If errors are noted in the catalogue, corrections announced from the stand take precedence over printed material.

Accommodations: Reservations can be made for you, just contact us. There is a paved, lighted airstrip 2.5 miles from the ranch. Contact us to pick you up at the airfield.



Canadian Farm
Insurance
Services
Inc.

HEATHER BARR

Suite 375, 13220 St. Albert Trail
Edmonton, AB T5L 4W1
Toll Free: 1-877-472-8678
Fax: (780) 448-0281
Web: www.cdnfarmins.com

Home: (403) 337-0052
Fax: (403) 337-0052
Cell: (780) 853-7067
Email: hbarr@cdnfarmins.com

Farm • Livestock • Commercial • Personal Lines



Tant Boothman & Bailey

We want to thank Tant for his years of hard work and dedication to this ranch and for becoming part of our family. He will surely be missed.



Doenz Ranches Ltd
P.O. Box 362
Warner, Alberta
T0K 2L0

CANADA POSTES
POST CANADA

Postage paid / Port payé
Addressed / Média poste
Admail / avec adresse
7200635

Returned Postage Guaranteed

